



# Radiographic Accessories Limited

Catalogue and Prices Effective from the 1st of January 2025

**Manufacturers of high quality**

**Accessories for Industrial Radiography**

*“Proud to be supplying the NDT industry for over 50 years”*

**We recommend that you request a quote as the list prices may be subject to change without notice**





*The Premier Manufacturer of High Quality Accessories for Industrial Radiography*

## **Radiographic Accessories Limited (RADAC)**

### **About Us**

Radiographic Accessories Limited has been established for over 50 years and is the leading manufacturer of specialised high-quality accessories for industrial radiography. We manufacture in the United Kingdom and are registered at Companies House in England Company number 02904032 and are ISO9001: 2015 accredited.

Radiographic Accessories Limited is the owner and manufacturer of the famous RADAC brand products. RADAC® is a registered trade mark wholly owned by Radiographic Accessories Limited.

We export Worldwide and have a network of RADAC authorised re-sellers. For Export orders in areas where we do not have a local re-seller we can provide a complete Certificate of Origin preparation service; including obtaining certified copies of commercial invoices. We can also assist with shipping rate quotes for your order or enquiry.

Our team highly skilled and experienced technicians complete all aspects of the production process in house from the initial design through to final manufacture at our own factory. By having this level of control of the end-to-end production process we can ensure the quality of RADAC products

RADAC's high quality manufacturing processes and rigorous quality checks are driven by a continuous improvement culture, resulting in products which are higher in quality but have a lower whole life cost than competing products.

RADAC's class leading products are used Worldwide and have grown to become the industry benchmark.



North East England  
Chamber of Commerce





*The Premier Manufacturer of High Quality Accessories for Industrial Radiography*

## Contact Us

RADAC®  
Radiographic Accessories Limited  
35 Northfield Way  
Aycliffe Industrial Park  
Newton Aycliffe  
County Durham  
DL5 6UF  
England



☎ +44 1642 790 580

✉ [sales@radac.co.uk](mailto:sales@radac.co.uk)

🌐 [www.radac.co.uk](http://www.radac.co.uk)





*The Premier Manufacturer of High Quality Accessories for Industrial Radiography*

## **Contents**

	<b>Page No.</b>
<b>Lead Intensifying Screens</b>	
How to Use the Catalogue	6
Product features	8
Lead Intensifying Screens Inch sizes & prices	10
Lead Intensifying Screens Metric sizes & prices	17
Lead Intensifying Screen Roll	24
Lead Filters	25
<b>Cassettes / X-ray film holders' sizes and prices</b>	
Product features	26
Standard Flexible Cassettes	29
Reinforced Flexible Cassettes	31
Ultra-Reinforced Flexible Cassettes	33
Heavy Duty Flexible Cassettes	35
One Seam Flexible Cassettes	37
Super Flat Flexible Cassettes	39
Double (Twin) Envelope Flexible Cassettes	41
Semi Rigid Cassettes	44
Rigid Cassettes	45
<b>Ready To Use Cassettes-with-Film</b>	46
<b>X –ray Film cutting service</b>	49



*The Premier Manufacturer of High Quality Accessories for Industrial Radiography*

<b>IQI – Image Quality Indicators</b>	50
European Standard EN 462-1: 1994 / ISO 19232-1-2013 Wire Type	51
ASTM E747-84a/ ASME SE747-97a (Wire Type) Penetrameters	59
<b>Lead Identification Markers</b>	63
<b>Radiation Warning Signs</b>	
Product Features	65
Radiation Warning Pennants	67
Radiation Vehicle Warning Signs	69
<b>Interleaving Paper</b>	71
<b>Computed Radiography (CR) Accessories</b>	
Product information	72
Copper Intensifying Screens (Metric sizes)	73
Copper Intensifying Screens (Inch sizes)	74
Custom size Imaging Plate Protectors	75
Flexible Imaging Plate Protectors (Metric Sizes)	77
Flexible Imaging Plates and Plate Protectors (Inch sizes)	78
Custom shaped imaging plates	79
RADVIEW LED Film Viewer	80
Referenced Radiographs	81
<b>Conditions of Sale</b>	82



*The Premier Manufacturer of High Quality Accessories for Industrial Radiography*

## How to use the catalogue

### RADAC®- Lead Intensifying Screens

The 5-digit catalogue number for RADAC Lead Intensifying Screens is made up of three digits that indicate the screen and pack size, and two digits for the corresponding thickness combination for front screen / back or intermediate screens.

The full range of thickness combinations of RADAC Lead Intensifying Screens are shown in the table below.

Column	Thickness (mm)
19	0.027/0.027
01	0.05/0.05
21	0.10 intermediate
02	0.05/0.10
03	0.05/0.15
04	0.10/0.10
24	0.20 intermediate
06	0.05/0.25
07	0.10/0.15
27	0.125/0.125
08	0.10/0.20
28	0.15/0.15
09	0.10/0.25
29	0.15/0.20
10	0.125/0.25
11	0.15/0.25
30	0.20/0.20
12	0.25/0.25
13	0.25/0.50
14	0.50/0.50
15	0.50/1.00
35	0.75/0.75
16	1.00/1.00
36	1.00/2.00
17	2.00/2.00
18	3.00/3.00



The Premier Manufacturer of High Quality Accessories for Industrial Radiography

**Example of how to select product catalogue number**

Pack size 25 pairs =50 individual screens

**Metric Size Lead Intensifying Screens 25 Pair Packs**

Size (cm)	CAT	Thicknesses									
		27	8	28	9	29	10	11	30	12	
5 x 20	200	76.43	84.44	84.44	92.45	92.45	96.45	100.48	100.48	116.48	
5 x 40	201	124.85	139.31	139.31	153.76	153.76	160.98	168.23	168.23	197.13	
6 x 24	202	104.28	116.45	116.45	128.63	128.63	134.70	140.80	140.80	165.18	
6 x 40	203	157.04	176.44	176.44	195.12	195.12	205.55	215.23	215.23	254.03	
6 x 48	204	178.88	201.67	201.67	224.48	224.48	235.85	247.27	247.27	292.82	
7 x 40	205	187.65	211.50	211.50	235.34	235.34	247.28	259.19	259.19	306.90	
7 x 48	206	214.94	243.04	243.04	271.11	271.11	285.16	299.22	299.22	355.39	
9 x 12	207	100.68	112.15	112.15	123.62	123.62	129.37	135.11	135.11	158.04	
10 x 20	208	124.85	139.31	139.31	153.76	153.76	160.98	168.23	168.23	197.13	
10 x 24	209	140.89	157.80	157.80	174.69	174.69	183.13	191.60	191.60	225.38	
10 x 40	210	214.87	242.22	242.22	269.54	269.54	283.20	296.88	296.88	351.52	
10 x 48	211	246.94	279.15	279.15	311.38	311.38	327.50	343.61	343.61	408.07	
13 x 18	212	164.51	184.46	184.46	204.44	204.44	214.43	224.40	224.40	264.37	
15 x 40	213	301.87	342.07	342.07	382.29	382.29	402.38	422.48	422.48	502.90	
18 x 24	214	289.85	328.19	328.19	366.57	366.57	385.77	404.94	404.94	481.69	
18 x 43	215	411.75	468.53	468.53	525.29	525.29	553.64	582.02	582.02	695.56	
20 x 30	216	301.87	342.07	342.07	382.29	382.29	402.38	422.48	422.48	502.90	
24 x 30	217	349.95	397.50	397.50	445.05	445.05	468.83	492.59	492.59	587.72	
30 x 40	218	558.06	636.90	636.90	715.73	715.73	755.16	794.57	794.57	952.26	
35 x 43	219	667.56	764.62	764.62	861.65	861.65	910.18	958.68	958.68	1152.77	

Screen size 10 x 24cm

Catalogue number 209 /27 = size 10 x 24cm front screen back screen thickness 0.125mm /

List price ex works per pack £140.89 Pounds Sterling

**Example**

To order a 25 pair pack (50 individual screens) size 10cm x 24cm thickness 0.125mm/0.125mm

1. In the first column select the size required 10cm x 24cm the second column has the first part of the catalogue number for the corresponding size which in this case is 209.
2. In the thickness row select the thickness column required in this case 0.125mm / 0.125mm, at the top of the column is the second part of the catalogue number which for 0.125mm/ 0.125mm is 27.
3. The corresponding price shown in this case £140.89 is the list price per pack ex works in Pounds Sterling.

The most economical way to purchase RADAC® Lead Intensifying Screens is in 25 pair packs (50 individual screens) as larger pack sizes result in a lower unit cost per pair.



*The Premier Manufacturer of High Quality Accessories for Industrial Radiography*

## **RADAC® - Lead Intensifying Screens Product Features**

- ✓ **Quality Assured** – rigorous quality control throughout the production process ensures that RADAC screens are free from defects that could interfere with the interpretation of the film.
- ✓ **Flexible and durable** – the high quality backing used in the production of RADAC screens means that they can be bent over and over again to a small radius without cracking resulting in a lower whole life cost. The high flexibility of RADAC screens ensures that optimal film-to-screen contact can be achieved.
- ✓ **High Intensification** – A peel-off plastic film cover protects the surface of the RADAC lead screen ensuring they are received in perfect condition. The high quality un-coated lead used in RADAC screens results in higher intensification and an absence of problems associated with lacquer coatings.
- ✓ **Full range of cut sizes** – RADAC screens are available in all standard metric and imperial sizes and are cut according to BS3490:1985 and ISO 5655-2000. Bespoke non-standard size screens can be manufactured to order. RADAC screens feature rounded corners to prevent damage to both films and cassettes.
- ✓ **Full range of thicknesses** – RADAC screens are available in thicknesses from 0.05mm to 3.0mm Pairs of any thickness combination can be supplied. Intermediate (centre) screens are also available with any lead thickness.







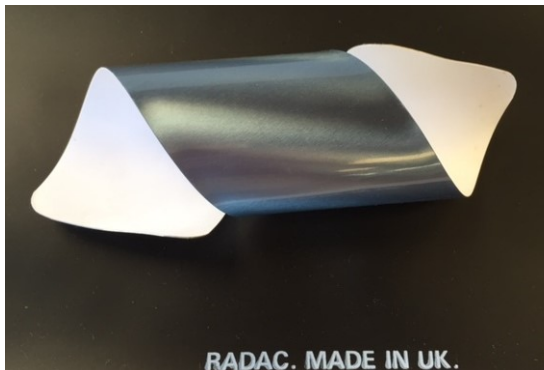
*The Premier Manufacturer of High Quality Accessories for Industrial Radiography*

### **RADAC® - Lead Intensifying Screens**

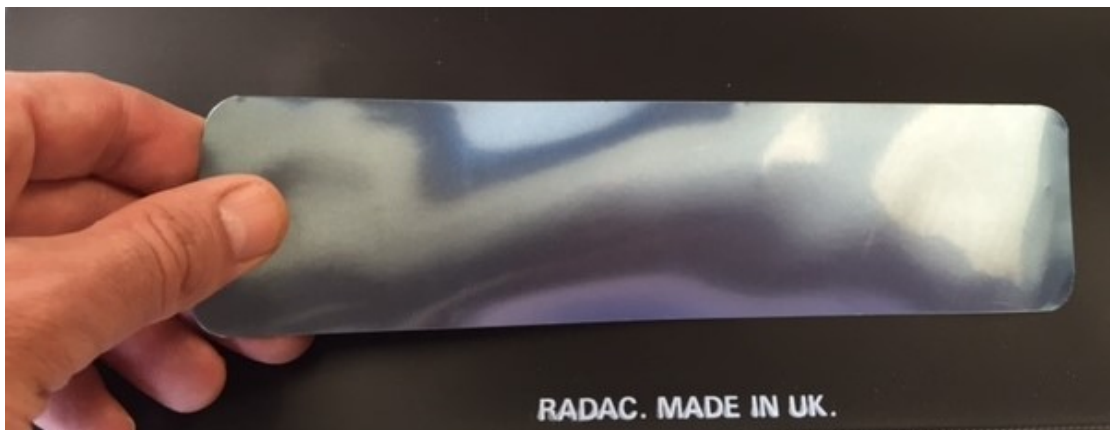
**Flexible and durable** – the high quality backing used in the production of RADAC Lead Intensifying Screens means that they can be bent over and over again to a small radius without cracking resulting in a lower whole life cost. The high flexibility of RADAC Lead Intensifying Screens ensures that optimal film-to-screen contact can be achieved.



**RADAC® lead screen as opened from**



**RADAC® lead screen having been repeatedly bent and rolled to tight radius**



**RADAC® lead screen flattened back out after bending**



The Premier Manufacturer of High Quality Accessories for Industrial Radiography

## **RADAC® Lead Intensifying Screens Inch Sizes and Prices**

### **Inch Size Lead Intensifying Screens 1 Pair Packs**

Size (In)	CAT	Thicknesses							
		13	14	15	35	16	36	17	18
	Thickness(mm)	0.25/0.50	0.50/0.50	0.50/1.00	0.75/0.75	1.00/1.00	1.00/2.00	2.00/2.00	3.00/3.00
3½ X 8½ in	<b>820</b>	20.44	23.48	30.56	30.49	37.63	52.02	66.42	95.31
3½ X 10 in	<b>821</b>	22.00	25.47	33.53	33.46	41.60	58.02	74.47	107.46
3½ X 17 in	<b>822</b>	31.54	37.30	50.78	50.67	64.28	91.78	119.30	174.47
4 X 10 in	<b>823</b>	24.51	28.62	38.20	38.10	47.75	67.26	86.75	125.83
	Thickness(mm)	0.25/0.50	0.50/0.50	0.50/1.00	0.75/0.75	1.00/1.00	1.00/2.00	2.00/2.00	3.00/3.00
4 X 15 in	<b>824</b>	32.80	38.97	53.34	53.20	67.72	97.02	126.29	185.06
4½ X 8½ in	<b>825</b>	24.24	28.21	37.41	37.32	46.63	65.39	84.14	121.82
4½ X 10 in	<b>826</b>	26.33	30.83	41.39	41.28	51.91	73.40	94.89	137.99
4½ X 11 in	<b>827</b>	31.12	36.93	50.45	50.32	63.97	91.49	119.03	174.27
	Thickness(mm)	0.25/0.50	0.50/0.50	0.50/1.00	0.75/0.75	1.00/1.00	1.00/2.00	2.00/2.00	3.00/3.00
4½ X 17 in	<b>828</b>	38.58	46.16	63.91	63.75	81.68	117.94	154.18	226.89
7 X 17 in	<b>829</b>	52.39	63.58	89.92	89.65	116.25	169.96	223.67	331.47
8 X 10 in	<b>830</b>	45.28	54.84	77.10	76.88	99.37	144.72	190.11	281.16
10 X 12 in	<b>831</b>	53.16	64.90	92.30	92.02	119.70	175.57	231.42	343.50
	Thickness(mm)	0.25/0.50	0.50/0.50	0.50/1.00	0.75/0.75	1.00/1.00	1.00/2.00	2.00/2.00	3.00/3.00
12 X 15 in	<b>832</b>	75.74	93.61	135.42	135.03	177.24	262.53	347.78	518.87
14 X 17 in	<b>833</b>	93.10	115.15	167.17	166.64	219.16	325.29	431.42	644.42

- ✓ **RADAC® 1 Pair Packs** - All 1 Pair Packs contain a single pair (2 individual) Lead Intensifying Screens. The standard combinations of front screen / back screen thicknesses are shown in the table above. RADAC Lead Intensifying Screens are cut to the standard sizes indicated in the above table according to BS3490:1985 and ISO 5655-2000. Bespoke non-standard size screens can be manufactured to order. All RADAC Lead Intensifying Screens feature rounded corners as standard to prevent damage to both films and cassettes.



The Premier Manufacturer of High Quality Accessories for Industrial Radiography

## Inch Size Lead Intensifying Screens 5 Pair Packs

Size (In)	CAT	Thicknesses									
		19	1	21	2	3	4	24	5	6	7
	Thickness(mm)	0.027/0.027	0.05/0.05	0.1 Int	0.05/0.10	0.05/0.15	0.10/0.10	0.20 Int	0.05//0.20	0.05/0.25	0.10/0.15
3½ X 8½ in	<b>520</b>	28.10	28.10	28.10	29.66	32.44	31.24	31.24	35.19	37.97	34.00
3½ X 10 in	<b>521</b>	29.98	29.98	29.98	31.75	34.90	33.51	33.51	38.04	41.21	36.68
3½ X 17 in	<b>522</b>	42.79	42.79	42.79	45.60	50.82	48.43	48.43	56.02	61.24	53.64
4 X 10 in	<b>523</b>	33.57	33.57	33.57	35.56	39.16	37.55	37.55	42.74	46.33	41.13
	Thickness(mm)	0.027/0.027	0.05/0.05	0.1 Int	0.05/0.10	0.05/0.15	0.10/0.10	0.20 Int	0.05//0.20	0.05/0.25	0.10/0.15
4 X 15 in	<b>524</b>	44.87	44.87	44.87	47.76	53.11	50.65	50.65	58.44	63.80	55.99
4½ X 8½ in	<b>525</b>	33.22	33.22	33.22	35.21	38.81	37.21	37.21	42.38	45.96	40.78
4½ X 10 in	<b>526</b>	35.74	35.74	35.74	38.00	42.10	40.24	40.24	46.16	50.27	44.34
4½ X 11 in	<b>527</b>	42.35	42.35	42.35	45.09	50.11	47.81	47.81	55.14	60.18	52.84
	Thickness(mm)	0.027/0.027	0.05/0.05	0.1 Int	0.05/0.10	0.05/0.15	0.10/0.10	0.20 Int	0.05//0.20	0.05/0.25	0.10/0.15
4½ X 17 in	<b>528</b>	51.82	51.82	51.82	55.47	62.32	59.12	59.12	69.15	76.01	65.97
7 X 17 in	<b>529</b>	69.17	69.17	69.17	74.48	84.58	79.79	79.79	94.69	104.80	89.89
8 X 10 in	<b>530</b>	60.62	60.62	60.62	65.01	73.25	69.39	69.39	81.49	89.73	77.63
10 X 12 in	<b>531</b>	70.20	70.20	70.20	75.54	85.65	80.88	80.88	95.76	105.87	90.99
	Thickness(mm)	0.027/0.027	0.05/0.05	0.1 Int	0.05/0.10	0.05/0.15	0.10/0.10	0.20 Int	0.05//0.20	0.05/0.25	0.10/0.15
12 X 15 in	<b>532</b>	98.38	98.38	98.38	106.43	121.82	114.47	114.47	137.23	152.61	129.86
14 X 17 in	<b>533</b>	119.27	119.27	119.27	129.58	145.12	140.17	140.17	169.36	189.22	159.78

- ✓ **RADAC® 5 Pair Packs** - All 5 Pair Packs contain 5 pairs ( 10 individual ) Lead Intensifying Screens.
- ✓ **RADAC® Intermediate 5 Packs** – All 5 packs contain 5 Intermediate Screens



The Premier Manufacturer of High Quality Accessories for Industrial Radiography

## Inch Size Lead Intensifying Screens 5 Pair Packs

Size (In)	CAT	Thicknesses								
		27	8	28	9	29	10	11	30	12
	Thickness(mm)	0.125/0.125	0.10/0.20	0.15/0.15	0.10/0.25	0.15/0.20	0.125/0.25	0.15/0.25	0.20/0.20	0.25/0.25
3½ X 8½ in	<b>520</b>	34.00	36.76	36.76	39.54	39.54	40.91	42.29	42.29	47.82
3½ X 10 in	<b>521</b>	36.68	39.82	39.82	42.95	42.95	44.54	46.12	46.12	52.39
3½ X 17 in	<b>522</b>	53.64	58.87	58.87	64.07	64.07	66.66	69.28	69.28	79.70
4 X 10 in	<b>523</b>	41.13	44.73	44.73	48.32	48.32	50.12	51.91	51.91	59.09
	Thickness(mm)	0.125/0.125	0.10/0.20	0.15/0.15	0.10/0.25	0.15/0.20	0.125/0.25	0.15/0.25	0.20/0.20	0.25/0.25
4 X 15 in	<b>524</b>	55.99	61.30	61.30	66.69	66.69	69.37	72.04	72.04	82.74
4½ X 8½ in	<b>525</b>	40.78	44.37	44.37	47.94	47.94	49.76	51.54	51.54	58.70
4½ X 10 in	<b>526</b>	44.34	48.43	48.43	52.51	52.51	54.56	56.59	56.59	64.78
4½ X 11 in	<b>527</b>	52.84	57.88	57.88	62.90	62.90	65.42	67.96	67.96	78.00
	Thickness(mm)	0.125/0.125	0.10/0.20	0.15/0.15	0.10/0.25	0.15/0.20	0.125/0.25	0.15/0.25	0.20/0.20	0.25/0.25
4½ X 17 in	<b>528</b>	65.97	72.80	72.80	79.65	79.65	83.07	86.51	86.51	100.17
7 X 17 in	<b>529</b>	89.89	99.99	99.99	110.10	110.10	115.15	120.20	120.20	140.41
8 X 10 in	<b>530</b>	77.63	85.86	85.86	94.11	94.11	98.22	102.34	102.34	118.81
10 X 12 in	<b>531</b>	90.99	101.11	101.11	111.22	111.22	116.29	121.35	121.35	141.60
	Thickness(mm)	0.125/0.125	0.10/0.20	0.15/0.15	0.10/0.25	0.15/0.20	0.125/0.25	0.15/0.25	0.20/0.20	0.25/0.25
12 X 15 in	<b>532</b>	129.86	145.25	145.25	160.67	160.67	168.37	176.08	176.08	206.87
14 X 17 in	<b>533</b>	159.78	179.66	179.66	199.54	199.54	209.48	219.41	219.41	259.19

- ✓ **RADAC® 5 Pair Packs** - All 5 Pair Packs contain 5 pairs ( 10 individual ) Lead Intensifying Screens.
- ✓ **RADAC® Intermediate 5 Packs** – All 5 packs contain 5 Intermediate Screens



The Premier Manufacturer of High Quality Accessories for Industrial Radiography

## Inch Size Lead Intensifying Screens 10 Pair Packs

		Thicknesses									
Size	CAT	19	1	21	2	3	4	24	5	6	7
(Inch)	Thickness(mm)	0.027/0.027	0.05/0.05	0.1 Int	0.05/0.10	0.05/0.15	0.10/0.10	0.20 Int	0.05//0.20	0.05/0.25	0.10/0.15
3½ X 8½ in	<b>920</b>	42.89	42.89	42.89	46.02	51.52	49.15	49.15	57.03	62.53	54.64
3½ X 10 in	<b>921</b>	46.40	46.40	46.40	49.90	56.16	53.42	53.42	62.44	68.70	59.68
3½ X 17 in	<b>922</b>	68.87	68.87	68.87	74.50	84.85	81.54	81.54	95.23	105.59	90.36
4 X 10 in	<b>923</b>	52.56	52.56	52.56	56.53	63.67	60.50	60.50	70.82	77.97	67.64
	Thickness(mm)	0.027/0.027	0.05/0.05	0.1 Int	0.05/0.10	0.05/0.15	0.10/0.10	0.20 Int	0.05//0.20	0.05/0.25	0.10/0.15
4 X 15 in	<b>924</b>	72.34	72.34	72.34	78.10	88.75	83.88	83.88	99.41	110.05	94.51
4½ X 8½ in	<b>925</b>	51.88	51.88	51.88	55.84	62.97	59.78	59.78	70.09	77.21	66.92
4½ X 10 in	<b>926</b>	56.55	56.55	56.55	61.01	69.15	65.47	65.47	77.29	85.42	73.62
4½ X 11 in	<b>927</b>	68.13	68.13	68.13	73.57	83.57	79.02	79.02	93.60	103.62	89.04
	Thickness(mm)	0.027/0.027	0.05/0.05	0.1 Int	0.05/0.10	0.05/0.15	0.10/0.10	0.20 Int	0.05//0.20	0.05/0.25	0.10/0.15
4½ X 17 in	<b>928</b>	85.15	85.15	85.15	92.43	106.03	99.69	99.69	119.65	133.29	113.30
7 X 17 in	<b>929</b>	116.73	116.73	116.73	127.30	147.41	137.91	137.91	167.49	187.63	157.99
8 X 10 in	<b>930</b>	101.04	101.04	101.04	109.78	126.18	118.49	118.49	142.55	158.94	134.86
10 X 12 in	<b>931</b>	118.77	118.77	118.77	129.39	149.54	140.03	140.03	169.68	189.83	160.19
	Thickness(mm)	0.027/0.027	0.05/0.05	0.1 Int	0.05/0.10	0.05/0.15	0.10/0.10	0.20 Int	0.05//0.20	0.05/0.25	0.10/0.15
12 X 15 in	<b>932</b>	170.33	170.33	170.33	186.36	217.02	202.39	202.39	247.67	278.33	233.05
14 X 17 in	<b>933</b>	208.76	208.76	208.76	229.29	268.87	249.81	249.81	308.44	348.01	289.39

- ✓ **RADAC® 10 Pair Packs** - All 10 Pair Packs contain 10 pairs ( 20 individual ) Lead Intensifying Screens.
- ✓ **RADAC® Intermediate 10 Packs** – All 10 packs contain 10 Intermediate Screens



The Premier Manufacturer of High Quality Accessories for Industrial Radiography

## Inch Size Lead Intensifying Screens 10 Pair Packs

Size (Inch)	CAT	Thicknesses								
		27	8	28	9	29	10	11	30	12
Thickness(mm)		0.125/0.125	0.10/0.20	0.15/0.15	0.10/0.25	0.15/0.20	0.125/0.25	0.15/0.25	0.20/0.20	0.25/0.25
3½ X 8½ in	<b>920</b>	54.64	60.16	60.16	65.67	65.67	68.43	71.18	71.18	82.19
3½ X 10 in	<b>921</b>	59.68	65.96	65.96	72.22	72.22	75.35	78.48	78.48	91.01
3½ X 17 in	<b>922</b>	90.47	100.84	100.84	111.21	111.21	116.41	121.59	121.59	142.34
4 X 10 in	<b>923</b>	67.64	74.79	74.79	81.93	81.93	85.51	89.08	89.08	103.34
Thickness(mm)		0.125/0.125	0.10/0.20	0.15/0.15	0.10/0.25	0.15/0.20	0.125/0.25	0.15/0.25	0.20/0.20	0.25/0.25
4 X 15 in	<b>924</b>	94.51	105.18	105.18	115.81	115.81	121.12	126.46	126.46	147.74
4½ X 8½ in	<b>925</b>	66.92	74.05	74.05	81.18	81.18	84.74	88.30	88.30	102.57
4½ X 10 in	<b>926</b>	73.62	81.77	81.77	89.90	89.90	93.96	98.05	98.05	114.31
4½ X 11 in	<b>927</b>	89.04	99.06	99.06	109.05	109.05	114.06	119.08	119.08	139.11
Thickness(mm)		0.125/0.125	0.10/0.20	0.15/0.15	0.10/0.25	0.15/0.20	0.125/0.25	0.15/0.25	0.20/0.20	0.25/0.25
4½ X 17 in	<b>928</b>	113.30	126.92	126.92	140.55	140.55	147.36	154.17	154.17	181.41
7 X 17 in	<b>929</b>	157.99	178.10	178.10	198.20	198.20	208.26	218.31	218.31	258.52
8 X 10 in	<b>930</b>	134.86	151.27	151.27	167.67	167.67	175.86	184.06	184.06	216.84
10 X 12 in	<b>931</b>	160.19	180.30	180.30	200.44	200.44	210.50	220.60	220.60	260.86
Thickness(mm)		0.125/0.125	0.10/0.20	0.15/0.15	0.10/0.25	0.15/0.20	0.125/0.25	0.15/0.25	0.20/0.20	0.25/0.25
12 X 15 in	<b>932</b>	233.05	263.68	263.68	294.34	294.34	309.68	324.98	324.98	386.29
14 X 17 in	<b>933</b>	289.39	328.97	328.97	368.52	368.52	388.32	408.12	408.12	487.24

- ✓ **RADAC® 10 Pair Packs** - All 10 Pair Packs contain 10 pairs ( 20 individual ) Lead Intensifying Screens.
- ✓ **RADAC® Intermediate 10 Packs** – All 10 packs contain 10 Intermediate Screens



The Premier Manufacturer of High Quality Accessories for Industrial Radiography

## Inch Size Lead Intensifying Screens 25 Pair Packs

Size (In)	CAT	Thicknesses									
		19	1	21	2	3	4	24	5	6	7
	Thickness(mm)	0.027/0.027	0.05/0.05	0.1 Int	0.05/0.10	0.05/0.15	0.10/0.10	0.20 Int	0.05//0.20	0.05/0.25	0.10/0.15
3½ X 8½ in	<b>220</b>	86.02	86.02	86.02	93.68	107.20	101.37	101.37	120.70	134.21	114.87
3½ X 10 in	<b>221</b>	94.23	94.23	94.23	102.85	118.21	111.46	111.46	132.03	148.93	126.81
3½ X 17 in	<b>222</b>	144.92	144.92	144.92	158.68	184.12	172.45	172.45	209.57	235.00	197.90
4 X 10 in	<b>223</b>	107.92	107.92	107.92	117.65	135.17	127.38	127.38	152.67	170.20	144.91
	Thickness(mm)	0.027/0.027	0.05/0.05	0.1 Int	0.05/0.10	0.05/0.15	0.10/0.10	0.20 Int	0.05//0.20	0.05/0.25	0.10/0.15
4 X 15 in	<b>224</b>	152.49	152.49	152.49	166.64	192.73	180.77	180.77	218.84	244.94	206.87
4½ X 8½ in	<b>225</b>	106.24	106.24	106.24	115.93	133.41	125.65	125.65	150.89	168.40	143.11
4½ X 10 in	<b>226</b>	117.15	117.15	117.15	128.13	148.09	139.09	139.09	168.04	187.99	159.04
4½ X 11 in	<b>227</b>	143.29	143.29	143.29	156.65	181.20	169.99	169.99	205.77	230.33	194.56
	Thickness(mm)	0.027/0.027	0.05/0.05	0.1 Int	0.05/0.10	0.05/0.15	0.10/0.10	0.20 Int	0.05//0.20	0.05/0.25	0.10/0.15
4½ X 17 in	<b>228</b>	182.34	182.34	182.34	200.16	233.57	218.00	218.00	266.95	300.36	251.38
7 X 17 in	<b>229</b>	255.40	255.40	255.40	281.35	330.65	307.32	307.32	379.97	429.29	356.62
8 X 10 in	<b>230</b>	218.92	218.92	218.92	240.30	280.51	261.66	261.66	320.71	360.91	301.88
10 X 12 in	<b>231</b>	260.46	260.46	260.46	286.54	335.90	312.57	312.57	385.30	434.70	361.98
	Thickness(mm)	0.027/0.027	0.05/0.05	0.1 Int	0.05/0.10	0.05/0.15	0.10/0.10	0.20 Int	0.05//0.20	0.05/0.25	0.10/0.15
12 X 15 in	<b>232</b>	380.29	380.29	380.29	419.58	494.74	458.87	458.87	569.90	645.07	534.03
14 X 17 in	<b>233</b>	469.84	469.84	469.84	520.18	617.21	570.51	570.51	714.27	811.31	667.56

- ✓ **RADAC® 25 Pair Packs** - All 25 Pair Packs contain 25 pairs ( 50 individual ) Lead Intensifying Screens.
- ✓ **RADAC® Intermediate 25 Packs** – All 25 packs contain 25 Intermediate Screens



The Premier Manufacturer of High Quality Accessories for Industrial Radiography

## Inch Size Lead Intensifying Screens 25 Pair Packs

Size (In)	CAT	Thicknesses								
		27	8	28	9	29	10	11	30	12
Thickness(mm)	Thickness(mm)	0.125/0.125	0.10/0.20	0.15/0.15	0.10/0.25	0.15/0.20	0.125/0.25	0.15/0.25	0.20/0.20	0.25/0.25
3½ X 8½ in	<b>220</b>	114.87	128.38	128.38	141.88	141.88	148.92	155.39	155.39	182.42
3½ X 10 in	<b>221</b>	126.81	142.18	142.18	157.53	157.53	165.20	172.90	172.90	203.63
3½ X 17 in	<b>222</b>	197.90	223.34	223.34	248.78	248.78	261.49	274.23	274.23	325.09
4 X 10 in	<b>223</b>	144.91	162.42	162.42	179.94	179.94	188.69	197.43	197.43	232.47
Thickness(mm)	Thickness(mm)	0.125/0.125	0.10/0.20	0.15/0.15	0.10/0.25	0.15/0.20	0.125/0.25	0.15/0.25	0.20/0.20	0.25/0.25
4 X 15 in	<b>224</b>	206.87	232.99	232.99	259.09	259.09	272.14	285.18	285.18	337.39
4½ X 8½ in	<b>225</b>	143.11	160.61	160.61	178.08	178.08	186.85	195.58	195.58	230.55
4½ X 10 in	<b>226</b>	159.04	179.01	179.01	198.95	198.95	208.93	218.92	218.92	258.84
4½ X 11 in	<b>227</b>	194.56	219.12	219.12	243.70	243.70	255.97	268.25	268.25	317.38
Thickness(mm)	Thickness(mm)	0.125/0.125	0.10/0.20	0.15/0.15	0.10/0.25	0.15/0.20	0.125/0.25	0.15/0.25	0.20/0.20	0.25/0.25
4½ X 17 in	<b>228</b>	251.38	284.79	284.79	318.17	318.17	334.89	351.59	351.59	418.37
7 X 17 in	<b>229</b>	356.62	405.93	405.93	455.24	455.24	479.90	504.54	504.54	603.16
8 X 10 in	<b>230</b>	301.88	342.08	342.08	382.30	382.30	402.40	422.48	422.48	502.91
10 X 12 in	<b>231</b>	361.98	411.37	411.37	460.78	460.78	485.44	510.15	510.15	608.94
Thickness(mm)	Thickness(mm)	0.125/0.125	0.10/0.20	0.15/0.15	0.10/0.25	0.15/0.20	0.125/0.25	0.15/0.25	0.20/0.20	0.25/0.25
12 X 15 in	<b>232</b>	534.03	609.20	609.20	684.36	684.36	721.95	759.53	759.53	909.88
14 X 17 in	<b>233</b>	667.56	764.62	764.62	861.65	861.65	910.18	958.68	958.68	1152.77

- ✓ **RADAC® 25 Pair Packs** - All 25 Pair Packs contain 25 pairs ( 50 individual ) Lead Intensifying Screens.
- ✓ **RADAC® Intermediate 25 Packs** – All 25 packs contain 25 Intermediate Screens





The Premier Manufacturer of High Quality Accessories for Industrial Radiography

## **RADAC® Lead Intensifying Screens Metric Sizes and Prices**

### **Metric Size Lead Intensifying Screens 1 Pair Packs**

Size	CAT	Thicknesses							
		13	14	15	35	16	36	17	18
(cm)	Thickness(mm)	0.25/0.50	0.50/0.50	0.50/1.00	0.75/0.75	1.00/1.00	1.00/2.00	2.00/2.00	3.00/3.00
5 x 20	<b>800</b>	15.23	17.08	21.33	21.29	25.57	34.22	42.88	60.20
5 x 40	<b>801</b>	21.88	25.26	33.13	33.07	40.98	56.98	72.97	105.05
6 x 24	<b>802</b>	18.95	21.68	28.04	27.98	34.40	47.35	60.29	86.25
6 x 40	<b>803</b>	26.15	30.51	40.76	40.65	51.00	71.85	92.71	134.60
	Thickness(mm)	0.25/0.50	0.50/0.50	0.50/1.00	0.75/0.75	1.00/1.00	1.00/2.00	2.00/2.00	3.00/3.00
6 x 48	<b>804</b>	28.55	34.14	46.20	46.10	58.27	82.85	107.46	156.78
7 x 40	<b>805</b>	30.18	35.59	48.22	48.09	60.85	86.60	112.38	164.06
7 x 48	<b>806</b>	33.76	40.11	55.06	54.90	69.97	100.38	130.79	191.81
9 x 12	<b>807</b>	18.53	21.12	27.08	27.03	33.07	45.21	57.38	81.80
	Thickness(mm)	0.25/0.50	0.50/0.50	0.50/1.00	0.75/0.75	1.00/1.00	1.00/2.00	2.00/2.00	3.00/3.00
10 x 20	<b>808</b>	21.88	25.26	33.13	33.07	40.98	56.98	72.97	105.05
10 x 24	<b>809</b>	23.97	27.97	37.20	37.09	46.41	65.19	83.98	92.63
10 x 40	<b>810</b>	33.84	40.31	55.37	55.23	70.44	101.12	131.82	193.37
10 x 48	<b>811</b>	38.05	45.68	63.47	63.66	81.29	117.54	153.83	226.62
	Thickness(mm)	0.25/0.50	0.50/0.50	0.50/1.00	0.75/0.75	1.00/1.00	1.00/2.00	2.00/2.00	3.00/3.00
13 x 18	<b>812</b>	27.19	31.90	42.85	42.75	53.79	76.08	98.36	143.09
15 x 40	<b>813</b>	45.28	54.84	77.10	76.88	99.37	144.72	190.11	281.16
18 x 24	<b>814</b>	43.72	52.81	74.05	73.84	95.30	138.57	181.84	268.68
18 x 43	<b>815</b>	59.70	73.19	104.70	104.42	136.24	200.49	264.78	393.72
	Thickness(mm)	0.25/0.50	0.50/0.50	0.50/1.00	0.75/0.75	1.00/1.00	1.00/2.00	2.00/2.00	3.00/3.00
20 x 30	<b>816</b>	45.28	54.84	77.10	76.88	98.85	144.72	190.11	281.16
24 x 30	<b>817</b>	47.16	57.47	81.57	81.34	105.70	154.85	151.68	302.59
30 x 40	<b>818</b>	78.88	97.61	141.51	141.09	185.39	274.85	364.31	543.80
35 x 43	<b>819</b>	93.10	115.15	167.17	166.64	219.16	325.29	431.42	644.42

- ✓ **RADAC® 1 Pair Packs** - All 1 Pair Packs contain a single pair (2 individual) Lead Intensifying Screens. The standard combinations of front screen / back screen thicknesses are shown in the table above. RADAC Lead Intensifying Screens are cut to the standard sizes indicated in the above table according to BS3490:1985 and ISO 5655-2000. Bespoke non-standard size screens can be manufactured to order. All RADAC Lead Intensifying Screens feature rounded corners as standard to prevent damage to both films and cassettes.



The Premier Manufacturer of High Quality Accessories for Industrial Radiography

## Metric Size Lead Intensifying Screens 5 Pair Packs

Size (cm)	CAT	Thicknesses									
		19	1	21	2	3	4	24	5	6	7
	Thickness(mm)	0.027/0.027	0.05/0.05	0.1 Int	0.05/0.10	0.05/0.15	0.10/0.10	0.20 Int	0.05//0.20	0.05/0.25	0.10/0.15
5 x 20	500	21.11	21.11	21.11	22.10	23.74	23.09	23.09	25.40	27.03	24.74
5 x 40	501	30.37	30.37	30.37	32.05	35.02	33.72	33.72	37.99	40.93	36.69
6 x 24	502	25.91	25.91	25.91	27.33	29.83	28.77	28.77	32.33	34.82	31.27
6 x 40	503	34.56	34.56	34.56	36.66	40.49	38.76	38.76	44.33	48.15	42.61
	Thickness(mm)	0.027/0.027	0.05/0.05	0.1 Int	0.05/0.10	0.05/0.15	0.10/0.10	0.20 Int	0.05//0.20	0.05/0.25	0.10/0.15
6 x 48	504	39.32	39.32	39.32	41.84	46.51	44.39	44.39	51.19	55.86	49.04
7 x 40	505	41.16	41.16	41.16	43.81	48.70	46.47	46.47	53.58	58.48	51.35
7 x 48	506	45.48	45.48	45.48	48.59	54.35	51.67	51.67	60.09	65.85	57.43
9 x 12	507	25.58	25.58	25.58	26.93	29.28	28.28	28.28	31.63	33.98	30.63
	Thickness(mm)	0.027/0.027	0.05/0.05	0.1 Int	0.05/0.10	0.05/0.15	0.10/0.10	0.20 Int	0.05//0.20	0.05/0.25	0.10/0.15
10 x 20	508	30.37	30.37	30.37	32.05	35.02	33.72	33.72	37.99	40.93	36.69
10 x 24	509	32.94	32.94	32.94	34.86	38.33	36.80	36.80	41.79	45.25	40.26
10 x 40	510	46.13	46.13	46.13	49.16	54.76	52.17	52.17	60.35	65.96	57.77
10 x 48	511	51.23	51.23	51.23	54.79	61.37	58.30	58.30	67.98	74.57	64.91
	Thickness(mm)	0.027/0.027	0.05/0.05	0.1 Int	0.05/0.10	0.05/0.15	0.10/0.10	0.20 Int	0.05//0.20	0.05/0.25	0.10/0.15
13 x 18	512	37.55	37.55	37.55	39.82	43.91	42.06	42.06	47.99	52.10	46.15
15 x 40	513	60.62	60.62	60.62	65.01	73.24	69.38	69.38	81.48	89.75	77.63
18 x 24	514	58.71	58.71	58.71	62.90	70.77	67.10	67.10	78.63	86.49	74.95
18 x 43	515	78.97	78.97	78.97	84.90	96.24	90.72	90.72	107.86	119.50	102.37
	Thickness(mm)	0.027/0.027	0.05/0.05	0.1 Int	0.05/0.10	0.05/0.15	0.10/0.10	0.20 Int	0.05//0.20	0.05/0.25	0.10/0.15
20 x 30	516	60.62	60.62	60.62	65.01	73.24	69.38	69.38	81.48	89.76	77.63
24 x 30	517	68.26	68.26	68.26	73.41	83.16	78.55	78.55	92.89	102.63	88.30
30 x 40	518	102.18	102.18	102.18	110.64	126.79	119.06	119.06	142.94	159.09	135.23
35 x 43	519	119.27	119.27	119.27	129.58	149.46	139.88	139.88	169.36	189.22	159.78

- ✓ RADAC® 5 Pair Packs - All 5 Pair Packs contain 5 pairs ( 10 individual ) Lead Intensifying Screens.
- ✓ RADAC® Intermediate 5 Packs – All 5 packs contain 5 Intermediate Screens



The Premier Manufacturer of High Quality Accessories for Industrial Radiography

### Metric Size Lead Intensifying Screens 5 Pair Packs

Size (cm)	CAT	Thicknesses								
		27	8	28	9	29	10	11	30	12
Thickness(mm)		0.125/0.125	0.10/0.20	0.15/0.15	0.10/0.25	0.15/0.20	0.15/0.20	0.15/0.25	0.20/0.20	0.25/0.25
5 x 20	<b>500</b>	24.74	26.40	26.40	28.04	28.04	27.97	29.66	29.66	32.95
5 x 40	<b>501</b>	36.69	39.67	39.67	42.61	42.61	44.11	45.58	45.58	51.65
6 x 24	<b>502</b>	31.27	33.76	33.76	36.25	36.25	37.50	38.76	38.76	43.73
6 x 40	<b>503</b>	42.61	46.42	46.42	50.26	50.26	52.17	54.07	54.07	61.76
6 x 48	<b>504</b>	49.04	53.70	53.70	58.39	58.39	60.72	63.07	63.07	73.30
7 x 40	<b>505</b>	51.35	56.24	56.24	61.12	61.12	63.57	66.02	66.02	75.79
7 x 48	<b>506</b>	57.43	63.20	63.20	68.95	68.95	71.82	74.69	74.69	86.20
9 x 12	<b>507</b>	30.63	33.00	33.00	35.35	35.35	36.52	37.70	37.70	42.39
10 x 20	<b>508</b>	36.69	39.67	39.67	42.61	42.61	44.11	45.58	45.58	51.50
10 x 24	<b>509</b>	40.26	43.72	43.72	47.18	47.18	48.92	50.65	50.65	57.58
10 x 40	<b>510</b>	57.77	63.38	63.38	68.98	68.98	71.78	74.57	74.57	85.78
10 x 48	<b>511</b>	64.91	71.52	71.52	78.11	78.11	81.43	84.74	84.74	97.93
13 x 18	<b>512</b>	46.15	50.26	50.26	54.35	54.35	56.38	58.43	58.43	66.63
15 x 40	<b>513</b>	77.63	85.86	85.86	94.09	94.09	98.21	102.34	102.34	118.81
18 x 24	<b>514</b>	74.95	82.80	82.80	90.67	90.67	94.61	98.54	98.54	115.05
18 x 43	<b>515</b>	102.37	113.97	113.97	125.62	125.62	131.42	137.25	137.25	160.49
20 x 30	<b>516</b>	77.63	85.86	85.86	94.09	94.09	98.21	102.34	102.34	118.82
24 x 30	<b>517</b>	88.30	98.04	98.04	107.79	107.79	112.65	117.52	117.52	137.02
30 x 40	<b>518</b>	135.23	151.37	151.37	167.52	167.52	175.59	183.68	183.68	215.99
35 x 43	<b>519</b>	159.78	179.66	179.66	199.54	199.54	209.48	219.41	219.41	259.19

- ✓ **RADAC® 5 Pair Packs** - All 5 Pair Packs contain 5 pairs ( 10 individual ) Lead Intensifying Screens.
- ✓ **RADAC® Intermediate 5 Packs** – All 5 packs contain 5 Intermediate Screens



The Premier Manufacturer of High Quality Accessories for Industrial Radiography

## Metric Size Lead Intensifying Screens 10 Pair Packs

Size (cm)	CAT	Thicknesses									
		19	1	21	2	3	4	24	5	6	7
	Thickness(mm)	0.027/0.027	0.05/0.05	0.1 Int	0.05/0.10	0.05/0.15	0.10/0.10	0.20 Int	0.05//0.20	0.05/0.25	0.10/0.15
5 x 20	<b>900</b>	30.70	30.70	30.70	32.69	35.96	34.68	34.68	39.23	42.51	37.97
5 x 40	<b>901</b>	46.66	46.66	46.66	49.98	55.45	53.31	53.31	61.77	67.66	59.22
6 x 24	<b>902</b>	39.25	39.25	39.25	42.08	47.05	44.93	44.93	52.04	56.99	49.92
6 x 40	<b>903</b>	56.40	56.40	56.40	60.74	68.66	65.11	65.11	76.55	84.47	73.01
	Thickness(mm)	0.027/0.027	0.05/0.05	0.1 Int	0.05/0.10	0.05/0.15	0.10/0.10	0.20 Int	0.05//0.20	0.05/0.25	0.10/0.15
6 x 48	<b>904</b>	62.79	62.79	62.79	67.86	77.15	72.90	72.90	86.43	95.74	82.22
7 x 40	<b>905</b>	65.86	65.86	65.86	71.16	80.88	76.42	76.42	90.60	100.33	86.17
7 x 48	<b>906</b>	73.86	73.86	73.86	80.04	91.48	86.20	86.20	102.94	114.39	97.64
9 x 12	<b>907</b>	38.45	38.45	38.45	41.15	45.84	43.86	43.86	50.52	55.19	48.53
	Thickness(mm)	0.027/0.027	0.05/0.05	0.1 Int	0.05/0.10	0.05/0.15	0.10/0.10	0.20 Int	0.05//0.20	0.05/0.25	0.10/0.15
10 x 20	<b>908</b>	46.66	46.66	46.66	49.98	55.88	53.31	53.31	61.77	67.66	59.22
10 x 24	<b>909</b>	51.38	51.38	51.38	55.21	62.11	59.06	59.06	69.00	75.90	65.96
10 x 40	<b>910</b>	74.69	74.69	74.69	80.73	91.88	86.76	86.76	103.01	114.17	97.91
10 x 48	<b>911</b>	84.16	84.16	84.16	91.49	104.33	98.26	98.26	117.40	130.61	111.39
	Thickness(mm)	0.027/0.027	0.05/0.05	0.1 Int	0.05/0.10	0.05/0.15	0.10/0.10	0.20 Int	0.05//0.20	0.05/0.25	0.10/0.15
13 x 18	<b>912</b>	59.26	59.26	59.26	63.75	71.88	68.22	68.22	80.04	88.18	76.38
15 x 40	<b>913</b>	101.04	101.04	101.04	109.78	126.18	118.49	118.49	142.55	158.94	134.86
18 x 24	<b>914</b>	97.51	97.51	97.51	105.82	121.46	114.18	114.18	137.14	152.78	129.81
18 x 43	<b>915</b>	133.84	133.84	133.84	146.02	169.18	158.20	158.20	192.32	215.46	181.33
	Thickness(mm)	0.027/0.027	0.05/0.05	0.1 Int	0.05/0.10	0.05/0.15	0.10/0.10	0.20 Int	0.05//0.20	0.05/0.25	0.10/0.15
20 x 30	<b>916</b>	101.04	101.04	101.04	109.78	126.18	118.49	118.49	142.55	158.94	134.86
24 x 30	<b>917</b>	115.23	115.23	115.23	125.47	144.86	135.73	135.73	164.25	183.63	155.11
30 x 40	<b>918</b>	177.42	177.42	177.42	194.22	226.36	211.00	211.00	258.52	290.66	243.16
35 x 43	<b>919</b>	208.76	208.76	208.76	229.29	268.87	249.81	249.81	308.44	347.28	289.39

- ✓ **RADAC® 10 Pair Packs** - All 10 Pair Packs contain 10 pairs ( 20 individual ) Lead Intensifying Screens.
- ✓ **RADAC® Intermediate 10 Packs** – All 10 packs contain 10 Intermediate Screens



The Premier Manufacturer of High Quality Accessories for Industrial Radiography

## Metric Size Lead Intensifying Screens 10 Pair Packs

Size	CAT	Thicknesses								
		27	8	28	9	29	10	11	30	12
(cm)	Thickness(mm)	0.125/0.125	0.10/0.20	0.15/0.15	0.10/0.25	0.15/0.20	0.125/0.25	0.15/0.25	0.20/0.20	0.25/0.25
5 x 20	<b>900</b>	37.97	41.22	41.22	44.48	44.48	46.12	47.75	47.75	54.29
5 x 40	<b>901</b>	59.22	65.11	65.11	71.00	71.00	73.96	76.88	76.88	88.69
6 x 24	<b>902</b>	49.92	54.87	54.87	59.83	59.83	62.33	64.81	64.81	74.76
6 x 40	<b>903</b>	73.01	80.92	80.92	88.82	88.82	92.78	96.75	96.75	112.55
	Thickness(mm)	0.125/0.125	0.10/0.20	0.15/0.15	0.10/0.25	0.15/0.20	0.125/0.25	0.15/0.25	0.20/0.20	0.25/0.25
6 x 48	<b>904</b>	82.22	91.49	91.49	100.81	100.81	105.45	110.08	110.08	128.65
7 x 40	<b>905</b>	86.17	95.89	95.89	105.62	105.62	110.48	115.34	115.34	134.79
7 x 48	<b>906</b>	97.64	109.11	109.11	120.27	120.27	126.28	132.01	132.01	154.91
9 x 12	<b>907</b>	48.53	53.20	53.20	57.91	57.91	60.23	62.57	62.57	71.94
	Thickness(mm)	0.125/0.125	0.10/0.20	0.15/0.15	0.10/0.25	0.15/0.20	0.125/0.25	0.15/0.25	0.20/0.20	0.25/0.25
10 x 20	<b>908</b>	59.22	65.11	65.11	71.00	71.00	73.96	76.88	76.88	88.69
10 x 24	<b>909</b>	65.96	72.84	72.84	79.73	79.73	83.19	86.63	86.63	100.43
10 x 40	<b>910</b>	97.91	109.04	109.04	120.19	120.19	125.75	131.33	131.33	153.61
10 x 48	<b>911</b>	111.39	124.53	124.53	137.68	137.68	144.25	150.82	150.82	177.11
	Thickness(mm)	0.125/0.125	0.10/0.20	0.15/0.15	0.10/0.25	0.15/0.20	0.125/0.25	0.15/0.25	0.20/0.20	0.25/0.25
13 x 18	<b>912</b>	76.38	84.53	84.53	92.67	92.67	96.75	100.82	100.82	117.09
15 x 40	<b>913</b>	134.86	151.27	151.27	167.67	167.67	175.86	184.06	184.06	216.84
18 x 24	<b>914</b>	129.81	145.46	145.46	161.10	161.10	168.93	176.75	176.75	208.06
18 x 43	<b>915</b>	181.33	204.49	204.49	227.63	227.63	239.21	250.79	250.79	297.06
	Thickness(mm)	0.125/0.125	0.10/0.20	0.15/0.15	0.10/0.25	0.15/0.20	0.125/0.25	0.15/0.25	0.20/0.20	0.25/0.25
20 x 30	<b>916</b>	134.86	151.27	151.27	167.67	167.67	175.86	184.06	184.06	216.84
24 x 30	<b>917</b>	155.11	174.50	174.50	193.89	193.89	203.59	213.29	213.29	252.08
30 x 40	<b>918</b>	243.16	282.49	282.49	307.44	307.44	323.53	339.59	339.59	403.90
35 x 43	<b>919</b>	289.39	328.97	328.97	368.52	368.52	388.32	408.12	408.12	487.25

- ✓ **RADAC® 10 Pair Packs** - All 10 Pair Packs contain 10 pairs (20 individual) Lead Intensifying Screens.
- ✓ **RADAC® Intermediate 10 Packs** – All 10 packs contain 10 Intermediate Screens



The Premier Manufacturer of High Quality Accessories for Industrial Radiography

## Metric Size Lead Intensifying Screens 25 Pair Packs

Size (cm)	CAT	Thicknesses									
		19	1	21	2	3	4	24	5	6	7
	Thickness(mm)	0.027/0.027	0.05/0.05	0.1 Int	0.05/0.10	0.05/0.15	0.10/0.10	0.20 Int	0.05//0.20	0.05/0.25	0.10/0.15
5 x 20	<b>200</b>	58.66	58.66	58.66	63.53	71.56	68.43	68.43	79.56	87.57	76.43
5 x 40	<b>201</b>	94.07	94.07	94.07	102.26	116.39	110.42	110.42	131.15	145.59	124.85
6 x 24	<b>202</b>	78.10	78.10	78.10	85.09	97.26	92.09	92.09	109.44	121.65	104.28
6 x 40	<b>203</b>	116.30	116.30	116.30	126.96	146.36	137.64	137.64	165.75	185.16	157.04
	Thickness(mm)	0.027/0.027	0.05/0.05	0.1 Int	0.05/0.10	0.05/0.15	0.10/0.10	0.20 Int	0.05//0.20	0.05/0.25	0.10/0.15
6 x 48	<b>204</b>	131.27	131.27	131.27	143.69	166.48	156.08	156.08	189.26	212.05	178.88
7 x 40	<b>205</b>	137.88	137.88	137.88	150.84	174.69	163.78	163.78	198.54	222.39	187.65
7 x 48	<b>206</b>	156.63	156.63	156.63	171.75	199.82	186.86	186.86	227.92	256.01	214.94
9 x 12	<b>207</b>	75.93	75.93	75.93	82.58	94.06	89.20	89.20	105.52	116.99	100.68
	Thickness(mm)	0.027/0.027	0.05/0.05	0.1 Int	0.05/0.10	0.05/0.15	0.10/0.10	0.20 Int	0.05//0.20	0.05/0.25	0.10/0.15
10 x 20	<b>208</b>	94.07	94.07	94.07	102.26	116.70	110.42	110.42	131.15	145.59	124.85
10 x 24	<b>209</b>	104.98	104.98	104.98	114.57	131.48	124.00	124.00	148.36	165.25	140.89
10 x 40	<b>210</b>	158.01	158.01	158.01	172.77	200.13	187.54	187.54	227.45	254.77	214.87
10 x 48	<b>211</b>	180.15	180.15	180.15	197.43	229.66	214.69	214.69	261.89	294.12	246.94
	Thickness(mm)	0.027/0.027	0.05/0.05	0.1 Int	0.05/0.10	0.05/0.15	0.10/0.10	0.20 Int	0.05//0.20	0.05/0.25	0.10/0.15
13 x 18	<b>212</b>	122.51	122.51	122.51	133.52	153.50	144.52	144.52	173.46	193.44	164.51
15 x 40	<b>213</b>	218.91	218.91	218.91	240.29	280.49	261.65	261.65	320.71	360.91	301.87
18 x 24	<b>214</b>	210.59	210.59	210.59	231.04	269.40	251.46	251.46	307.78	346.15	289.85
18 x 43	<b>215</b>	295.32	295.32	295.32	325.15	381.91	355.01	355.01	438.66	495.43	411.75
	Thickness(mm)	0.027/0.027	0.05/0.05	0.1 Int	0.05/0.10	0.05/0.15	0.10/0.10	0.20 Int	0.05//0.20	0.05/0.25	0.10/0.15
20 x 30	<b>216</b>	216.08	216.08	216.08	240.29	280.49	261.65	261.65	320.71	360.91	301.87
24 x 30	<b>217</b>	252.41	252.41	252.41	280.08	324.82	302.38	302.38	372.37	419.92	349.95
30 x 40	<b>218</b>	396.89	396.89	396.89	438.05	516.89	479.21	479.21	595.74	674.58	558.06
35 x 43	<b>219</b>	469.84	469.84	469.84	520.18	617.21	570.51	570.51	714.27	811.31	667.56

- ✓ **RADAC® 25 Pair Packs** - All 25 Pair Packs contain 25 pairs (50 individual) Lead Intensifying Screens.
- ✓ **RADAC® Intermediate 25 Packs** – All 25 packs contain 25 Intermediate Screens



The Premier Manufacturer of High Quality Accessories for Industrial Radiography

## Metric Size Lead Intensifying Screens 25 Pair Packs

Size (cm)	CAT	Thicknesses								
		27	8	28	9	29	10	11	30	12
Thickness(mm)		0.125/0.125	0.10/0.20	0.15/0.15	0.10/0.25	0.15/0.20	0.125/0.25	0.15/0.25	0.20/0.20	0.25/0.25
5 x 20	<b>200</b>	76.43	84.44	84.44	92.45	92.45	96.45	100.48	100.48	116.48
5 x 40	<b>201</b>	124.85	139.31	139.31	153.76	153.76	160.98	168.23	168.23	197.13
6 x 24	<b>202</b>	104.28	116.45	116.45	128.63	128.63	134.70	140.80	140.80	165.18
6 x 40	<b>203</b>	157.04	176.44	176.44	195.12	195.12	205.55	215.23	215.23	254.03
6 x 48	<b>204</b>	178.88	201.67	201.67	224.48	224.48	235.85	247.27	247.27	292.82
7 x 40	<b>205</b>	187.65	211.50	211.50	235.34	235.34	247.28	259.19	259.19	306.90
7 x 48	<b>206</b>	214.94	243.04	243.04	271.11	271.11	285.16	299.22	299.22	355.39
9 x 12	<b>207</b>	100.68	112.15	112.15	123.62	123.62	129.37	135.11	135.11	158.04
10 x 20	<b>208</b>	124.85	139.31	139.31	153.76	153.76	160.98	168.23	168.23	197.13
10 x 24	<b>209</b>	140.89	157.80	157.80	174.69	174.69	183.13	191.60	191.60	225.38
10 x 40	<b>210</b>	214.87	242.22	242.22	269.54	269.54	283.20	296.88	296.88	351.52
10 x 48	<b>211</b>	246.94	279.15	279.15	311.38	311.38	327.50	343.61	343.61	408.07
13 x 18	<b>212</b>	164.51	184.46	184.46	204.44	204.44	214.43	224.40	224.40	264.37
15 x 40	<b>213</b>	301.87	342.07	342.07	382.29	382.29	402.38	422.48	422.48	502.90
18 x 24	<b>214</b>	289.85	328.19	328.19	366.57	366.57	385.77	404.94	404.94	481.69
18 x 43	<b>215</b>	411.75	468.53	468.53	525.29	525.29	553.64	582.02	582.02	695.56
20 x 30	<b>216</b>	301.87	342.07	342.07	382.29	382.29	402.38	422.48	422.48	502.90
24 x 30	<b>217</b>	349.95	397.50	397.50	445.05	445.05	468.83	492.59	492.59	587.72
30 x 40	<b>218</b>	558.06	636.90	636.90	715.73	715.73	755.16	794.57	794.57	952.26
35 x 43	<b>219</b>	667.56	764.62	764.62	861.65	861.65	910.18	958.68	958.68	1152.77

- ✓ **RADAC® 25 Pair Packs** - All 25 Pair Packs contain 25 pairs (50 individual) Lead Intensifying Screens.
- ✓ **RADAC® Intermediate 25 Packs** – All 25 packs contain 25 Intermediate Screens



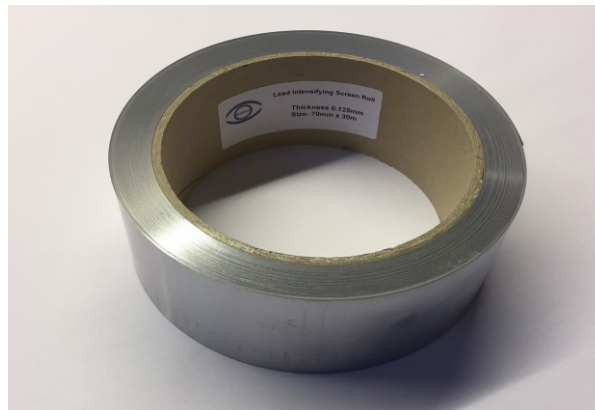


The Premier Manufacturer of High Quality Accessories for Industrial Radiography

## **RADAC® Lead Intensifying Screen Rolls**

RADAC Lead Intensifying Screen rolls are available in rolls of 30-meter length and 70mm width, and available in two thicknesses 0.125mm or 0.10mm. To reduce the likely hood of kinking the screen particularly when loading long lengths, the non-lacquered lead foil is laminated to a flexible backing material of 0.25mm thickness.

RADAC Lead Intensifying Screen rolls are ideally suited to pipeline radiography particularly when used in conjunction with RADAC Custom Flexible Cassettes which can be produced to order in any length or size that may be required.



Lead Intensifying Screen Roll 0.250mm backing						
	Roll Width	Roll Length	Pb Foil thickness	Price Each £ GBP	Price 10 Pack £ GBP	Price 25 Pack £ GBP
Cat No					10	25
7030	70mm	30m	0.125mm	208.54	2021.68	4900.57
7032	70mm	30m	0.10mm	198.63	1925.15	4679.43

- ✓ Savings can be achieved by purchasing RADAC® Screen Roll in packs of 10 or 25 as the higher pack sizes result in a lower unit cost.





The Premier Manufacturer of High Quality Accessories for Industrial Radiography

### RADAC® Lead Filters

		Filters Single Pack Price Each				
Size	CAT	F05	F10	F20	F30	
(cm)	Thickness	0.50mm	1.0mm	2.0mm	3.0mm	
5 x 20	<b>800</b>	8.53	12.78	21.43	30.09	
5 x 40	<b>801</b>	12.63	20.48	36.48	52.51	
6 x 24	<b>802</b>	10.84	17.19	30.14	43.12	
6 x 40	<b>803</b>	15.25	25.49	46.35	67.29	
	Thickness	0.50mm	1.0mm	2.0mm	3.0mm	
6 x 48	<b>804</b>	17.07	29.13	53.72	78.38	
7 x 40	<b>805</b>	17.79	30.42	56.18	82.02	
7 x 48	<b>806</b>	20.05	34.98	65.39	95.90	
9 x 12	<b>807</b>	10.55	16.53	28.69	40.89	
	Thickness	0.50mm	1.0mm	2.0mm	3.0mm	
10 x 20	<b>808</b>	12.63	20.48	36.48	52.51	
10 x 24	<b>809</b>	13.97	23.20	41.98	46.31	
10 x 40	<b>810</b>	20.15	35.22	65.90	96.68	
10 x 48	<b>811</b>	22.83	40.64	76.91	113.31	
	Thickness	0.50mm	1.0mm	2.0mm	3.0mm	
13 x 18	<b>812</b>	15.95	26.89	49.17	71.54	
15 x 40	<b>813</b>	27.41	49.68	95.05	140.57	
18 x 24	<b>814</b>	26.40	47.64	90.92	134.33	
18 x 43	<b>815</b>	36.59	68.11	132.38	196.86	
	Thickness	0.50mm	1.0mm	2.0mm	3.0mm	
20 x 30	<b>816</b>	27.41	49.41	95.05	140.57	
24 x 30	<b>817</b>	28.73	52.84	75.84	151.29	
30 x 40	<b>818</b>	48.80	92.69	182.15	271.90	
35 x 43	<b>819</b>	57.57	109.58	215.71	322.21	

- ✓ RADAC® Single Lead Filter Packs - All Packs 1 individual lead filter.
- ✓ RADAC® Lead Filters are manufactured from the same high purity lead as our lead intensifying screens
  - ✓ RADAC® Lead filters are produced to exact tolerances



*The Premier Manufacturer of High Quality Accessories for Industrial Radiography*

## **RADAC® - Cassettes (X-Ray Film Holders)**

- ✓ **Quality Assured** – RADAC use of the best materials and manufacturing techniques combined with rigorous quality control throughout the production process ensures that RADAC cassettes are free from defects.
- ✓ **Full range of cassettes in Inch, Metric and Custom Sizes** – RADAC manufacture a full range of high-quality industry leading cassettes to meet your testing needs.
- ✓ **Full range of cassette styles** - RADAC manufacture a full range of cassette types including, Flexible Single and Double Envelope Cassettes, Semi-Rigid Cassettes and bespoke custom sized / shaped cassettes designed to your requirements.
- ✓ **Full range of material grades** - RADAC cassettes are available in Standard, Reinforced and Heavy-Duty grade materials to suit your operating environment.
- ✓ **Industry Leader** – RADAC cassettes consistent high quality and innovative features have resulted in them becoming the benchmark standard for the NDT industry.
- ✓ **Cost Effective** - RADAC cassettes durability results in a low whole life cost. **Further savings can be achieved by purchasing RADAC Flexible Cassettes in packs of 10 or 25 as the higher pack sizes result in a lower unit cost.**





*The Premier Manufacturer of High Quality Accessories for Industrial Radiography*

## **RADAC® - Cassettes Product Features**

- ✓ **Flexible Single Envelope Cassettes** - available in RADAC Standard, Reinforced, Ultra-Reinforced and Heavy-Duty grade materials with a VELCRO® Brand fastening light seal. RADAC “Super Flat” single envelope cassettes are designed to lay perfectly flat and do not have a Velcro fastener.
- ✓ **Flexible One Seam Reinforced Single Envelope Cassettes** - constructed in RADAC Reinforced grade material and manufactured without side seams, they are made to outlast any other type of flexible cassettes.
- ✓ **Flexible Double Envelope Cassettes** – constructed from RADAC Standard grade material and designed to lie perfectly flat, having no fold over ends or VELCRO® Brand fastening.
- ✓ **Flexible Magnetic Cassettes** – constructed as per RADAC Standard Single Envelope Cassettes but with the addition of Magnetic Rubber Strips riveted down the two sides of the cassette. These cassettes are suited to Plate work, Storage Tanks, and large diameter circumferential welds.
- ✓ **Semi Rigid Cassettes** - constructed as per RADAC Standard Single Envelope Cassettes but with the addition single reinforcing insert to provide semi rigidity. These cassettes lend themselves to a variety of applications.
- ✓ **Rigid Cassettes** – constructed from RADAC Heavy Duty grade material with a dual reinforcing insert to provide rigidity and produced on the Double Envelope principle. These cassettes are ideally suited for castings.
- ✓ **Bespoke “Special” Cassettes** – RADAC can manufacture special custom cassettes to your own specification, including:
  - Single envelope cassettes up to 5m long for pipe radiography.
  - Pipe radiography cassettes with long edge opening for use with Imaging Plates
  - Cassettes of special sizes and custom irregular shapes



*The Premier Manufacturer of High Quality Accessories for Industrial Radiography*

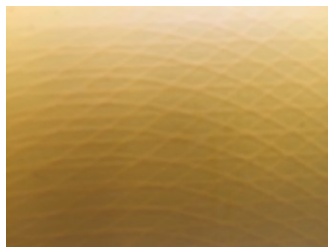
## **RADAC® - Cassettes Product Features**



**Welded light tight seams**



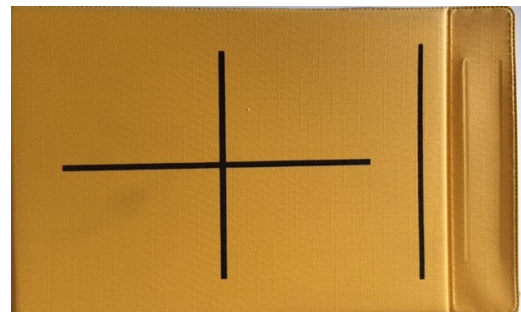
**Welded VELCRO® Brand fastening light tight seal**



**RADAC® flexible cassettes are available in standard grade or durable reinforced grade material**



**RADAC® durable flexible one seam reinforced single envelope cassettes manufactured from reinforced grade material.**



**RADAC® semi – rigid and rigid cassettes are available with printed alignment centre marks**



The Premier Manufacturer of High Quality Accessories for Industrial Radiography

## RADAC® - Flexible Cassette Standard Sizes and List Prices

### RADAC® Standard Single Envelope Cassettes

Manufactured in RADAC's specially formulated light proof 400 micron black PVC. These cassettes are held closed a VELCRO® Brand fastening light seal and feature a finger tab at the bottom of the cassette to assist holding the cassette for easier and quicker opening in the darkroom.



### Metric Sizes and Prices (£ GBP)

Metric Sizes		Standard Single Envelope		
Size (cm)	Cat No	Each	10 pack	25 pack
		41	4110	4125
5 x 20	400	2.35	22.23	54.26
5 x 40	401	2.75	26.03	63.52
6 x 24	402	2.67	25.21	61.53
6 x 40	403	3.04	28.88	70.45
6 x 48	404	3.22	30.50	74.42
7 x 40	405	3.27	30.91	75.41
7 x 48	406	3.48	32.95	80.38
9 x 12	407	2.91	27.53	67.15
10 x 20	408	3.34	31.59	77.07
10 x 24	409	3.43	32.53	79.38
10 x 40	410	3.91	37.15	90.63
10 x 48	411	4.24	40.26	98.24
13 x 18	412	3.82	36.19	88.31
15 x 40	413	5.35	50.69	123.70
18 x 24	414	5.23	49.60	121.05
18 x 43	415	6.12	58.00	141.56
20 x 30	416	6.08	57.61	140.57
24 x 30	417	7.19	68.31	166.70
30 x 40	418	9.26	87.95	214.65
35 x 43	419	11.24	106.67	260.29



The Premier Manufacturer of High Quality Accessories for Industrial Radiography

**RADAC® Standard Single envelope Cassettes**

**Inch Sizes and Prices (£GBP)**

Size (inch)	Cat No	Standard Single Envelope		
		Each	10 pack	25 pack
		41	4110	4125
3½ x 8½	420	3.04	28.88	70.46
3½ x 10	421	3.16	30.10	73.46
3½ x 17	422	3.63	34.60	84.43
4 x 10	423	3.49	33.11	80.77
4 x 15	424	3.94	37.46	91.40
4½ x 8½	425	3.57	34.05	83.09
4½ x 10	426	3.77	35.83	87.41
4½ x 11	427	3.86	36.64	89.41
4½ x 17	428	4.38	41.81	102.03
7 x 17	429	5.97	56.94	138.93
8 x 10	430	5.68	54.07	131.94
10 x 12	431	7.37	70.29	171.48
12 x 15	432	9.26	88.38	215.68
14 x 17	433	11.25	107.31	261.86

- ✓ Savings can be achieved by purchasing RADAC® Standard Flexible Cassettes in packs of 10 or 25 as the higher pack sizes result in a lower unit cost.



The Premier Manufacturer of High Quality Accessories for Industrial Radiography

**RADAC® Reinforced Single Envelope Cassettes**

Manufactured in RADAC's exclusive 350-micron PVC / Nylon / PVC laminated lightproof material. The Nylon reinforcement mesh reduces the tendency of the PVC to split at the seams whilst the PVC retains the flexibility of the cassette in cold conditions so are ideally suited to



**Metric Sizes and Prices (£ GBP)**

Size (cm)	Cat No	Reinforced Single Envelope		
		Each	10 pack	25 pack
		42	4210	4225
5 x 20	400	3.36	31.85	77.35
5 x 40	401	4.01	38.18	93.15
6 x 24	402	3.73	35.47	86.57
6 x 40	403	4.36	41.54	101.39
6 x 48	404	4.68	44.52	108.63
7 x 40	405	4.65	44.37	108.30
7 x 48	406	5.00	47.61	116.19
9 x 12	407	3.84	36.55	89.21
10 x 20	408	4.47	42.49	103.68
10 x 24	409	4.62	43.97	107.30
10 x 40	410	5.45	51.93	126.73
10 x 48	411	5.98	57.05	139.22
13 x 18	412	4.97	47.34	115.54
15 x 40	413	7.33	69.88	170.50
18 x 24	414	6.83	65.15	158.97
18 x 43	415	8.27	78.90	192.55
20 x 30	416	8.06	76.88	187.60
24 x 30	417	9.51	90.63	221.18
30 x 40	418	12.29	117.21	286.02
35 x 43	419	15.12	144.22	351.94



The Premier Manufacturer of High Quality Accessories for Industrial Radiography

**RADAC® Reinforced Single envelope Cassettes**

**Inch Sizes and Prices (£GBP)**

Size (inch)	Cat No	Reinforced Single Envelope		
		Each	10 pack	25 pack
		42	4210	4225
3½ x 8½	420	4.20	39.90	97.38
3½ x 10	421	4.38	41.82	102.02
3½ x 17	422	5.23	49.85	121.64
4 x 10	423	4.76	45.36	110.67
4 x 15	424	5.50	52.43	127.96
4½ x 8½	425	4.83	46.04	112.33
4½ x 10	426	5.14	48.90	119.31
4½ x 11	427	5.28	50.26	122.63
4½ x 17	428	6.19	58.98	143.90
7 x 17	429	8.23	78.44	191.42
8 x 10	430	7.44	70.95	173.16
10 x 12	431	9.76	93.02	226.99
12 x 15	432	12.40	118.35	288.79
14 x 17	433	15.12	144.22	351.94

- ✓ Savings can be achieved by purchasing RADAC® Reinforced Flexible Cassettes in packs of 10 or 25 as the higher pack sizes result in a lower unit cost.





*The Premier Manufacturer of High Quality Accessories for Industrial Radiography*

**RADAC® Ultra Reinforced Flexible Single Envelope Cassettes**

Manufactured from RADAC's specially – formulated 650-micron highly durable nylon reinforced PVC. They are coloured black on the inside for light-tightness and yellow on the outside for easy recognition. The reinforcement mesh improves durability whilst the 650-micron PVC provides greater protection whilst retaining flexibility. The fastening closure has the loop on the inner to minimise scratching whilst loading and unloading the cassette. Providing a high degree of protection these cassettes are ideally suited for use with flexible Imaging Plates substantially reducing the risk of accidental damage in the field and prolonging plate life.



**Metric Sizes and Prices (£ GBP)**

		<b>Ultra Single Envelope</b>		
		<b>Each</b>	<b>10 pack</b>	<b>25 pack</b>
<b>Size (cm)</b>	<b>Cat No</b>	<b>48</b>	<b>4810</b>	<b>4825</b>
5 x 20	<b>400</b>	4.17	39.57	96.10
5 x 40	<b>401</b>	5.14	48.79	118.48
6 x 24	<b>402</b>	4.69	44.45	107.95
6 x 40	<b>403</b>	5.61	53.26	129.34
6 x 48	<b>404</b>	6.05	57.46	139.54
7 x 40	<b>405</b>	5.94	56.37	136.91
7 x 48	<b>406</b>	6.49	61.53	149.41
9 x 12	<b>407</b>	4.64	44.04	106.96
10 x 20	<b>408</b>	5.49	52.05	126.38
10 x 24	<b>409</b>	5.72	54.35	131.97
10 x 40	<b>410</b>	6.90	65.46	158.96
10 x 48	<b>411</b>	7.70	73.05	177.39
13 x 18	<b>412</b>	6.01	57.05	138.55
15 x 40	<b>413</b>	9.31	88.35	214.58
18 x 24	<b>414</b>	8.37	79.41	192.86
18 x 43	<b>415</b>	10.47	99.47	241.55
20 x 30	<b>416</b>	10.00	94.99	230.69
24 x 30	<b>417</b>	11.85	112.47	273.15
30 x 40	<b>418</b>	15.42	146.49	355.75
35 x 43	<b>419</b>	18.91	179.55	436.04

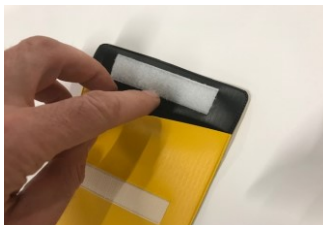


The Premier Manufacturer of High Quality Accessories for Industrial Radiography

**RADAC® Ultra Reinforced Flexible Single envelope Cassettes**

**Inch Sizes and Prices (£GBP)**

Size (inch)	Cat No	Ultra Single Envelope		
		Each	10 pack	25 pack
3½ x 8½	<b>420</b>	5.14	48.66	118.15
3½ x 10	<b>421</b>	5.47	51.78	125.72
3½ x 17	<b>422</b>	6.64	63.02	153.05
4 x 10	<b>423</b>	5.87	55.57	134.94
4 x 15	<b>424</b>	6.91	65.47	158.96
4½ x 8½	<b>425</b>	5.87	55.57	134.94
4½ x 10	<b>426</b>	6.31	59.91	145.46
4½ x 11	<b>427</b>	6.52	61.81	150.07
4½ x 17	<b>428</b>	7.84	74.40	180.68
7 x 17	<b>429</b>	10.36	98.25	238.60
8 x 10	<b>430</b>	9.02	85.51	207.67
10 x 12	<b>431</b>	12.00	113.98	276.77
12 x 15	<b>432</b>	15.43	146.49	355.75
14 x 17	<b>433</b>	18.92	179.69	436.38



The fastening closure has the loop on the inner to minimise scratching whilst loading and unloading the cassette.



Manufactured from RADAC's specially – formulated 650-micron durable nylon reinforced PVC. These cassettes are ideally suited for providing greater protection when using flexible Imaging Plates in the field.

- ✓ Savings can be achieved by purchasing RADAC® Ultra Reinforced Flexible Cassettes in packs of 10 or 25 as the higher pack sizes result in a lower unit cost.



The Premier Manufacturer of High Quality Accessories for Industrial Radiography

**RADAC® Heavy Duty Single Envelope Cassettes**

RADAC heavy duty cassettes are manufactured in double thickness material consisting of an internal layer of 400-micron black PVC and an external reinforced layer comprised of 350-micron PVC / Nylon / PVC laminate. This combination produces a cassette capable of withstanding tough conditions at normal temperatures.



**Metric Sizes and Prices (£ GBP)**

Size (cm)	Cat No	Heavy Duty Single Envelope		
		Each	10 pack	25 pack
5 x 20	<b>400</b>	4.36	41.54	101.38
5 x 40	<b>401</b>	5.43	51.76	126.28
6 x 24	<b>402</b>	4.91	46.71	114.00
6 x 40	<b>403</b>	5.94	56.52	137.92
6 x 48	<b>404</b>	6.43	61.28	149.55
7 x 40	<b>405</b>	6.30	60.06	146.57
7 x 48	<b>406</b>	6.89	65.64	160.18
9 x 12	<b>407</b>	4.83	46.04	112.33
10 x 20	<b>408</b>	5.75	54.75	133.60
10 x 24	<b>409</b>	5.98	57.06	139.26
10 x 40	<b>410</b>	7.31	69.59	169.82
10 x 48	<b>411</b>	8.17	77.90	190.11
13 x 18	<b>412</b>	6.29	59.92	146.23
15 x 40	<b>413</b>	9.37	89.34	218.01
18 x 24	<b>414</b>	8.76	83.48	203.72
18 x 43	<b>415</b>	11.11	105.95	258.55
20 x 30	<b>416</b>	10.54	100.51	245.25
24 x 30	<b>417</b>	12.44	118.61	289.46
30 x 40	<b>418</b>	16.30	155.51	379.52
35 x 43	<b>419</b>	20.05	191.33	466.92



The Premier Manufacturer of High Quality Accessories for Industrial Radiography

**RADAC® Heavy Duty Single envelope Cassettes**

**Inch Sizes and Prices (£GBP)**

Size (inch)	Cat No	Heavy Duty Single Envelope		
		Each	10 pack	25 pack
		44	4410	4425
3½ x 8½	<b>420</b>	5.38	51.21	124.97
3½ x 10	<b>421</b>	5.74	54.62	133.28
3½ x 17	<b>422</b>	7.04	67.15	163.84
4 x 10	<b>423</b>	6.15	58.57	142.91
4 x 15	<b>424</b>	7.31	69.59	169.82
4½ x 8½	<b>425</b>	6.15	58.57	142.91
4½ x 10	<b>426</b>	6.64	63.33	154.54
4½ x 11	<b>427</b>	6.88	65.52	159.86
4½ x 17	<b>428</b>	8.31	79.27	193.42
7 x 17	<b>429</b>	10.97	104.60	255.23
8 x 10	<b>430</b>	9.46	90.15	220.01
10 x 12	<b>431</b>	12.60	120.11	293.11
12 x 15	<b>432</b>	16.29	155.38	379.18
14 x 17	<b>433</b>	20.06	191.47	467.23

- ✓ Savings can be achieved by purchasing RADAC® Heavy Duty Flexible Cassettes in packs of 10 or 25 as the higher pack sizes result in a lower unit cost.



The Premier Manufacturer of High Quality Accessories for Industrial Radiography

**RADAC® - One Seam Single Envelope Cassettes**

RADAC One – Seam cassettes are constructed from RADAC’s specially – formulated, heavy duty, nylon reinforced PVC. They are coloured black on the inside for light-tightness and yellow on the outside for easy recognition. These cassettes are manufactured without side seams this innovative design combined with RADAC's specially formulated materials and high-quality manufacturing techniques means they are made to outlast any other type of flexible cassette.



**Metric Sizes and Prices (£ GBP)**

Size (cm)	Cat No	One Seam Single Envelope		
		Each	10 pack	25 pack
		<b>43</b>	<b>4310</b>	<b>4325</b>
5 x 20	<b>400</b>	4.18	39.77	97.05
5 x 40	<b>401</b>	5.15	49.04	119.64
6 x 24	<b>402</b>	4.69	44.68	109.02
6 x 40	<b>403</b>	5.62	53.53	130.61
6 x 48	<b>404</b>	6.05	57.75	140.92
7 x 40	<b>405</b>	5.95	56.66	138.25
7 x 48	<b>406</b>	6.49	61.84	150.88
9 x 12	<b>407</b>	4.64	44.26	108.02
10 x 20	<b>408</b>	5.49	52.30	127.62
10 x 24	<b>409</b>	5.74	54.62	133.28
10 x 40	<b>410</b>	6.91	65.77	160.52
10 x 48	<b>411</b>	7.71	73.40	179.13
13 x 18	<b>412</b>	6.02	57.35	139.92
15 x 40	<b>413</b>	9.32	88.80	216.68
18 x 24	<b>414</b>	8.37	79.81	194.75
18 x 43	<b>415</b>	10.47	99.95	243.93
20 x 30	<b>416</b>	10.01	95.46	232.97
24 x 30	<b>417</b>	11.86	113.04	275.84
30 x 40	<b>418</b>	15.43	147.20	359.24
35 x 43	<b>419</b>	18.91	180.44	440.33



The Premier Manufacturer of High Quality Accessories for Industrial Radiography

**RADAC® One Seam Single envelope Cassettes**

**Inch Sizes and Prices (£GBP)**

Size (inch)	Cat No	One Seam Single Envelope		
		Each	10 pack	25 pack
		43	4310	4325
3½ x 8½	420	5.14	48.90	119.31
3½ x 10	421	5.47	52.02	126.95
3½ x 17	422	6.64	63.33	154.54
4 x 10	423	5.87	55.84	136.26
4 x 15	424	6.91	65.77	160.52
4½ x 8½	425	5.87	55.84	136.26
4½ x 10	426	6.31	60.20	146.89
4½ x 11	427	6.52	62.10	151.54
4½ x 17	428	7.84	74.77	182.45
7 x 17	429	10.36	98.73	240.94
8 x 10	430	9.02	85.93	209.70
10 x 12	431	12.00	114.53	279.49
12 x 15	432	15.43	147.20	359.24
14 x 17	433	18.92	180.57	440.66



- ✓ Savings can be achieved by purchasing RADAC® One Seam Flexible Cassettes in packs of 10 or 25 as the higher pack sizes result in a lower unit cost.



The Premier Manufacturer of High Quality Accessories for Industrial Radiography

**RADAC® Super Flat Single Envelope Cassettes**

Manufactured in RADAC's specially formulated light proof 400-micron black PVC. Having no Velcro closure these cassettes are designed to sit perfectly flat. The fold over end forms a light proof seal and is designed to be secured by adhesive tape



Super Flat Cassette

**Metric Sizes and Prices (£ GBP)**

Metric Sizes		Super Flat Single Envelope		
Size (cm)	Cat No	Each	10 pack	25 pack
		49	4910	4925
5 x 20	400	2.35	22.24	54.26
5 x 40	401	2.75	26.03	63.52
6 x 24	402	2.67	25.21	61.53
6 x 40	403	3.04	28.88	70.45
6 x 48	404	3.22	30.50	74.42
7 x 40	405	3.27	30.91	75.41
7 x 48	406	3.48	32.95	80.38
9 x 12	407	2.91	27.53	67.15
10 x 20	408	3.34	31.59	77.07
10 x 24	409	3.43	32.53	79.38
10 x 40	410	3.91	37.15	90.63
10 x 48	411	4.24	40.26	98.24
13 x 18	412	3.82	36.19	88.31
15 x 40	413	5.35	50.69	123.70
18 x 24	414	5.23	49.60	121.05
18 x 43	415	6.12	58.00	141.56
20 x 30	416	6.08	57.61	140.57
24 x 30	417	7.19	68.31	166.70
30 x 40	418	9.26	87.95	214.65
35 x 43	419	11.24	106.67	260.29

- ✓ Savings can be achieved by purchasing RADAC® Super Flat Flexible Cassettes in packs of 10 or 25 as the higher pack sizes result in a lower unit cost.



The Premier Manufacturer of High Quality Accessories for Industrial Radiography

**RADAC® Super Flat Single Envelope Cassettes**

**Inch Sizes and Prices (£GBP)**

Size (inch)	Cat No	Super Flat Single Envelope		
		Each	10 pack	25 pack
		49	4910	4925
3½ x 8½	420	3.01	28.60	69.78
3½ x 10	421	3.13	29.81	72.76
3½ x 17	422	3.60	34.26	83.62
4 x 10	423	3.44	32.78	80.00
4 x 15	424	3.89	37.09	90.53
4½ x 8½	425	3.54	33.72	82.29
4½ x 10	426	3.73	35.47	86.57
4½ x 11	427	3.81	36.28	88.54
4½ x 17	428	4.35	41.41	101.05
7 x 17	429	5.91	56.38	137.58
8 x 10	430	5.62	53.55	130.67
10 x 12	431	7.31	69.59	169.83
12 x 15	432	9.18	87.53	213.61
14 x 17	433	11.14	106.28	259.36



Super Flat cassette opening and a fold over light proof seal



Super Flat cassette with light proof seal folded and secured with adhesive tape

- ✓ Savings can be achieved by purchasing RADAC® Super Flat Flexible Cassettes in packs of 10 or 25 as the higher pack sizes result in a lower unit cost.





The Premier Manufacturer of High Quality Accessories for Industrial Radiography

### **RADAC® – Double (Twin) Envelope Cassettes**

The main advantage of RADAC double – envelope cassettes is that they lie perfectly flat, having no fold over ends or VELCRO® Brand fastening. RADAC Double Envelope Cassettes consist of two envelopes an inner and outer. Film and screens are loaded into the inner envelope (the smaller of the two). The inner envelope is then inserted, open end first into the larger outer envelope. Light tightness is assured because the open end of the inner envelope is up against the closed end of the outer envelope. RADAC Double Envelope cassettes are manufactured from RADAC's flexible black 400-micron PVC material and are clearly marked "RADAC BACK" on both the inner and outer for easy identification in both the darkroom and on site.



#### **Metric Sizes and Prices (£ GBP)**

Size (cm)	Cat No	Double Envelope		
		Each	10 pack	25 pack
		45	4510	4525
5 x 20	<b>400</b>	4.15	39.49	96.38
5 x 40	<b>401</b>	5.08	48.34	117.98
6 x 24	<b>402</b>	4.58	43.58	106.35
6 x 40	<b>403</b>	5.55	52.84	128.95
6 x 48	<b>404</b>	6.03	57.48	140.25
7 x 40	<b>405</b>	5.87	55.84	136.26
7 x 48	<b>406</b>	6.45	61.55	150.22
9 x 12	<b>407</b>	4.61	43.85	107.02
10 x 20	<b>408</b>	5.43	51.76	126.28
10 x 24	<b>409</b>	5.71	54.34	132.61
10 x 40	<b>410</b>	6.78	64.69	157.86
10 x 48	<b>411</b>	7.50	71.50	174.47
13 x 18	<b>412</b>	6.12	58.29	142.24
15 x 40	<b>413</b>	9.14	87.15	212.70
18 x 24	<b>414</b>	8.62	82.12	200.40
18 x 43	<b>415</b>	10.37	98.86	241.27
20 x 30	<b>416</b>	10.21	97.38	237.61
24 x 30	<b>417</b>	12.14	115.75	282.48
30 x 40	<b>418</b>	15.71	149.93	365.88
35 x 43	<b>419</b>	19.04	181.67	443.32



The Premier Manufacturer of High Quality Accessories for Industrial Radiography

## **RADAC® – Double Envelope Cassettes**

### **Inch Sizes and Prices (£GBP)**

Size (inch)	Cat No	Double Envelope		
		Each	10 pack	25 pack
3½ x 8½	<b>420</b>	5.06	48.34	117.97
3½ x 10	<b>421</b>	5.39	51.47	125.61
3½ x 17	<b>422</b>	6.49	61.96	151.20
4 x 10	<b>423</b>	5.61	53.51	130.60
4 x 15	<b>424</b>	6.63	63.32	154.53
4½ x 8½	<b>425</b>	5.73	54.74	133.59
4½ x 10	<b>426</b>	6.16	58.82	143.56
4½ x 11	<b>427</b>	6.28	59.91	146.22
4½ x 17	<b>428</b>	7.38	70.40	171.81
7 x 17	<b>429</b>	10.11	96.54	235.61
8 x 10	<b>430</b>	9.37	89.46	218.33
10 x 12	<b>431</b>	12.37	118.06	288.12
12 x 15	<b>432</b>	15.71	149.92	365.88
14 x 17	<b>433</b>	19.03	181.65	443.31



RADAC's Double Envelope Cassettes consist of two envelopes an inner and outer. The larger outer envelope shown on left hand side, smaller inner envelope shown on the right-hand side.



*The Premier Manufacturer of High Quality Accessories for Industrial Radiography*

### **RADAC® – Double Envelope Cassettes**



Smaller inner envelope showing the aperture that the films and screens are loaded into. Both the inner and outer are clearly marked “RADAC BACK” for easy identification in both the darkroom and on site.



The inner envelope is then inserted, open end first into the larger outer envelope. Light tightness is assured because the open end of the inner envelope is up against the closed end of the outer envelope. As the RADAC Double Envelope cassettes have no fold over ends or VELCRO® Brand fastening they lie perfectly flat.

- ✓ Savings can be achieved by purchasing RADAC® Double Envelope Cassettes in packs of 10 or 25 as the higher pack sizes result in a lower unit cost.



The Premier Manufacturer of High Quality Accessories for Industrial Radiography

## RADAC® Semi - Rigid Cassettes / Film Holders

### Sizes and Prices

Size (cm)	Semi Rigid Single Envelope		
	Cat No	Each	10 pack
10 x 24	409	13.15	117.15
10 x 40	410	16.04	142.87
13 x 18	412	13.81	123.02
18 x 24	414	19.24	171.39
18 x 43	415	24.42	217.53
24 x 30	417	27.33	243.53
30 x 40	418	35.84	319.30
35 x 43	419	44.09	392.83

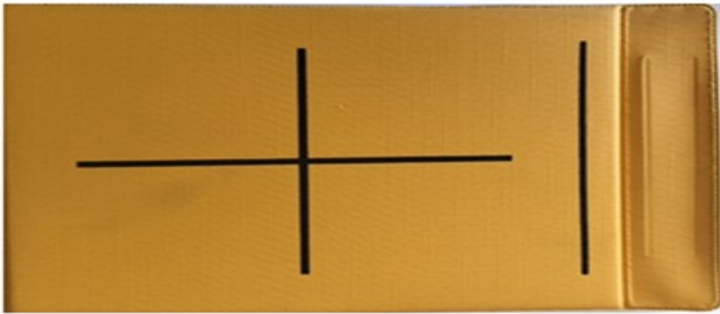


- ✓ **Semi Rigid Cassettes** - constructed as per RADAC Standard Single Envelope Cassettes but with the addition single reinforcing insert to provide semi rigidity whilst retaining a degree of flexibility. These cassettes lend themselves to a variety of applications where a stiffer cassette may be required.



The Premier Manufacturer of High Quality Accessories for Industrial Radiography

## **RADAC® Rigid Cassettes / Film Holders**



Size (cm)	Cat No	Rigid Double Envelope	
		Each 47	10 pack 4710
10 x 24	409	23.39	218.20
10 x 40	410	28.53	266.11
13 x 18	412	24.57	229.13
18 x 24	414	34.23	319.22
18 x 43	415	43.44	405.15
24 x 30	417	48.63	453.58
30 x 40	418	63.76	594.71
35 x 43	419	78.45	731.66

RADAC® rigid cassettes are available with printed alignment centre marks



**RADAC® Semi-Rigid hinge opening**



**RADAC® Semi-Rigid Cassette showing inner envelope and retaining light proof pocket**

- ✓ **Rigid Cassettes** – constructed from RADAC Heavy Duty grade material with a dual reinforcing insert to provide rigidity and produced on the Double Envelope principle. These cassettes are ideally suited for use with castings.



*The Premier Manufacturer of High Quality Accessories for Industrial Radiography*

### **RADAC® – Ready to Use Cassettes with Film**



RADAC ready to use Cassettes with Film are bespoke manufactured to fine dimensional tolerances as there are no variations in the cassettes construction 100% test repeatability can be achieved. The ready to use Cassettes with Film are manufactured using RADAC's specially formulated 300-micron PVC to ensure light tightness in all conditions. They can be produced to contain just one film or be multiple loaded for such applications where duplicate records are required to be maintained. They can also be manufactured with any combination of lead foil screens (front, back and / or centre foils) for intensification or scatter – absorbing purposes. Each cassette with film has a colour coded patch fitted to indicate the type of film enclosed and its expiry date. RADAC specialise in the manufacture of sub 20mm shaped Cassettes with Film to support applications where CR techniques are not sufficient.

RADAC Cassettes with Film are specially made to the customer's exact requirements to obtain a quote please contact us and provide the following information:

1. Engineering drawing showing all dimensions
2. The permitted edge-edge separation
3. The number and types of films to be enclosed
4. Whether lead-foil screens are required and their thicknesses.
5. The number of cassettes in the initial order



*The Premier Manufacturer of High Quality Accessories for Industrial Radiography*

## **RADAC® – ready to use Cassettes with Film saving you time and money in the field**

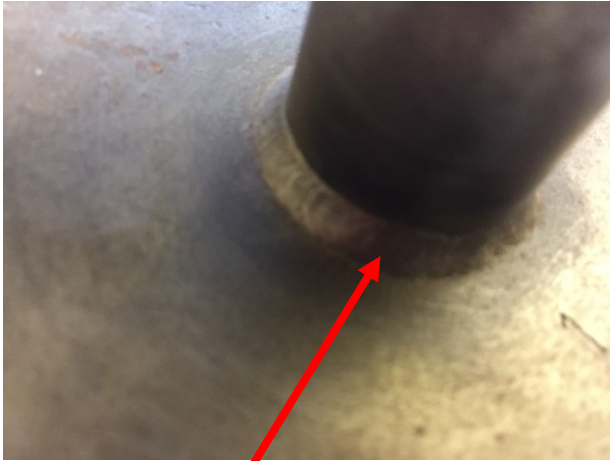
- ✓ **Quality Assured** – RADAC use of the finest materials, precision manufacturing techniques combined with rigorous quality control throughout the production process which ensures RADAC ready to use Cassettes with Film are free from defects. RADAC ready to use Cassettes with Film are produced with Certificates of Conformity.
  
- ✓ **Standardization** – RADAC ready to use Cassettes with Film are machine cut ensuring that each film is the same size and that the edge of the film is always as close as possible to the outer edge of the cassette, as there are no variations in the RADAC cassettes with film construction 100% test repeatability can be achieved.
  
- ✓ **Precision made** – RADAC are the leading manufacturer of bespoke precision made ready to use Cassettes with Film, being manufactured to fine tolerances they are widely used and relied upon in the following fields:
  - Nuclear Industry
  - Aircraft engines
  - General Engineering
  - Pressure Vessels
  
- ✓ **Manufactured to your exact requirements** - RADAC ready to use Cassettes with Film are specially formulated to ensure light tightness in all conditions; they can be manufactured with x-ray film of any desired shape or type. They can be produced to contain just one film or can be multiple-loaded and may include lead foil for specific applications.





*The Premier Manufacturer of High Quality Accessories for Industrial Radiography*

**RADAC® – ready to use Cassettes with Film saving you time and money in the field**

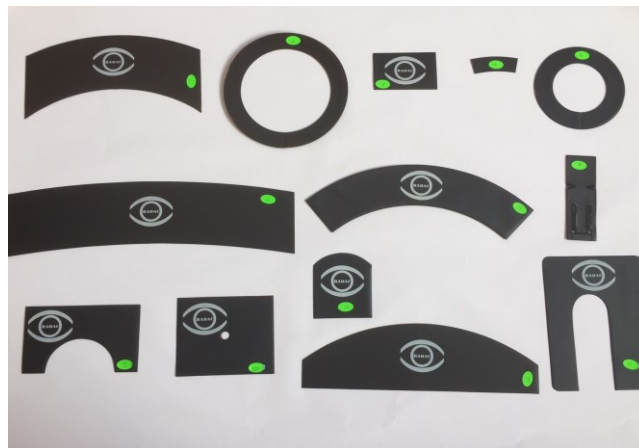


**Boiler tube weld**



**RADAC ready to use Cassette with Film**

Example of a RADAC ready to use Cassette with film being used to inspect boiler tube welds. In this instance the cassette is double loaded with film of the same speed to provide a duplicate record.



**Examples of RADAC ready to use Cassettes with Film**

RADAC ready to use Cassettes with Film can be manufactured in any shape. They can be produced to contain just one film or be multiple loaded for such applications where duplicate records are required to be maintained. They can also be manufactured with any combination of lead foil screens (front, back and / or centre foils) for intensification or scatter – absorbing purposes.





*The Premier Manufacturer of High Quality Accessories for Industrial Radiography*

## **RADAC® – X Ray Film Cutting Service**

- ✓ **Quality Assured** – rigorous quality control throughout the cutting and re-packing process ensures that your films are received as you specified them.
- ✓ **Bespoke sizes precision cut** - standard X-ray Films cut exactly to the size you require. Films are machine cut ensuring that each film is exactly the same size.
- ✓ **Radius cutting of film corners** –RADAC technicians can apply a radius cut to round the corners of your films to ease loading into cassettes.
- ✓ **Film repacking service** - RADAC technicians can either put the cut films back in their original boxes or re-pack them to your specific requirements. RADAC's packaging seals the films, in hundreds, in light-tight, water-tight PVC bags, labelled with film type, batch number and expiry date.

To obtain a quote please contact us and provide the following information:

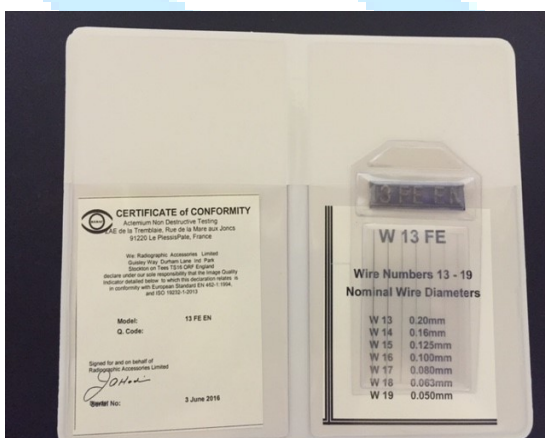
1. Film size to be supplied for cutting down.
2. Number of boxes (100 sheets) to be cut down.
3. The size that the film is to cut down to.
4. If corner radius is required.
5. Any specific requirements such as film writing removal.
6. Repacking requirements.



The Premier Manufacturer of High Quality Accessories for Industrial Radiography

## **RADAC® Image quality Indicators (IQI's)**

- ✓ **Quality Assured** – RADAC use of the best materials and manufacturing techniques combined with rigorous quality control throughout the production process ensures that RADAC IQI's are free from defects.
- ✓ **Manufactured to exacting standards** – RADAC manufacture European Standard EN462-1 / ISO 19232-1-2013 Wire Type Image Quality Indicators and American Standard ASTM E747-18 / ASME SE747-97a (Wire Type) Penetrators.
- ✓ **Full range of materials** – RADAC indicators are available in Steel (FE), Aluminium (AL), Copper (CU), Titanium (TI) and Inconel alloy (IN). The steel indicators are for use on most forms of steel and iron: the aluminium indicators are for use on aluminium and its alloys: the copper indicators are use on copper and its alloys and the titanium indicators for use on titanium and its alloys.
- ✓ **Full audit traceability** - All RADAC Image Quality Indicators have a unique serial number for Quality Assurance purposes. From this number we hold records for the wire type, batch, actual measured diameters and date of manufacture. All RADAC Image Quality Indicators are supplied with Certificates of Conformity.



**EN 462-1: 1994 / ISO 19223-1-2013 Wire Type Image Quality Indicator are also available in a presentation wallet with the unique individual conformity certificate for the corresponding IQI.**



The Premier Manufacturer of High Quality Accessories for Industrial Radiography

## RADAC® Image Quality Indicators

European Standard EN 462-1: 1994 / ISO 19232-1-2013 Wire TYPE Image Quality Indicators.

### Construction

Each RADAC EN type indicator consists of a series of seven parallel wires of different thicknesses, RADAC EN type indicators are available in both 5mm and 2.5mm wire spacing and in full range of wire lengths from 10mm to 100mm long. The wires are mounted between two thin sheets of transparent, flexible PVC. A lead monogram indicates the number of the thinnest and the thickest wires, the material and includes the EN symbol.



Example 10 FE EN indicator with 2.5mm wire spacing and 50mm wire length



Example shown of 10 FE EN IQI with 5mm wire spacing and 25mm wire



Example 10 FE EN indicator with 5.0mm wire spacing and 10mm wire length

### Wire Diameters

Wire No.	19	18	17	16	15	14	13	12	11	10
Dia mm	0.05	0.063	0.08	0.10	0.125	0.16	0.20	0.25	0.32	0.40
Wire No.	9	8	7	6	5	4	3	2	1	
Dia mm	0.50	0.63	0.80	1.00	1.25	1.60	2.00	2.50	3.20	

RADAC EN type indicators are available in Steel (FE), Stainless Steel (SS), Aluminium (AL), Copper (CU), ICONEL 600 (IN), and Titanium (TI). The steel and stainless steel indicators are for use on most forms of steel and iron: the aluminium indicators are for use on aluminium and its alloys: the copper indicators are use on copper and its alloys : the Inconel indicators are for use on Inconel Nickel Chromium alloys and the titanium indicators for use on titanium and its alloys.

These are four sizes: 1 MM EN, containing wires 1 – 7: 6 MM EN with wires 6 to 12: 10 MM EN with wires 10 – 16 and 13 MM EN with wires 13 to 19 (where MM is the metal – FE, AL, CU and TI)

**EN indicators can be supplied in wallets, with individual Certificates of Conformity or without wallets and a single Certificate of Conformity detailing the individual serial numbers and IQI types.**



The Premier Manufacturer of High Quality Accessories for Industrial Radiography

## RADAC® Image Quality Indicators

### European Standard EN 462-1: 1994 / ISO 19232-1-2013 Wire TYPE Image Quality Indicators

#### 1 EN Types and Prices £GBP

Standard EN462-1	Type	Wire Length (mm)	5mm wire spacing			
			Cat No	Price £ GBP		
				Each	10 Pack	25 Pack
				10	25	
	1 FE EN	10	64197	16.70	159.73	384.98
	1 AL EN	10	64198	17.81	170.19	410.20
	1 CU EN	10	64199	17.81	170.19	410.20
	1 FE EN	25	64194	16.70	159.73	384.98
	1 AL EN	25	64195	17.81	170.19	410.20
	1 CU EN	25	64196	17.81	170.19	410.20
	1 FE EN	50	64191	16.70	159.73	384.98
	1 AL EN	50	64192	17.81	170.19	410.20
	1 CU EN	50	64193	17.81	170.19	410.20

Steel (FE), Aluminium (AL), Copper (CU),

- ✓ Savings can be achieved by purchasing RADAC® Image Quality Indicators in packs of 10 or 25 as the higher pack sizes result in a lower unit cost.



The Premier Manufacturer of High Quality Accessories for Industrial Radiography

## RADAC® Image Quality Indicators

### European Standard EN 462-1: 1994 / ISO 19232-1-2013 Wire TYPE Image Quality Indicators

#### 6 EN Types and Prices £GBP

5mm wire spacing						
Standard EN462-1	Type	Wire Length (mm)	Cat No	Price £ GBP		
				Each	10 Pack	25 Pack
				10	25	
	6 FE EN	10	64157	14.11	134.87	325.07
	6 AL EN	10	64158	15.19	145.21	349.99
	6 CU EN	10	64159	15.19	145.21	349.99
	6 TI EN	10	64141	68.29	652.82	1573.45
	6 SS EN	10	64144	15.19	145.21	349.99
	6 IN EN	10	64188	49.50	473.15	1140.42
	6 FE EN	25	64154	14.11	134.87	325.07
	6 AL EN	25	64155	15.19	145.21	349.99
	6 CU EN	25	64156	15.19	145.21	349.99
	6 TI EN	25	64142	68.29	652.82	1573.45
	6 SS EN	25	64145	15.19	145.21	349.99
	6 IN EN	25	64149	49.50	473.15	1140.42
	6 FE EN	50	64151	14.11	134.87	325.07
	6 AL EN	50	64152	15.19	145.21	349.99
	6 CU EN	50	64153	15.19	145.21	349.99
	6 TI EN	50	64143	68.29	652.82	1573.45
	6 SS EN	50	64146	15.19	145.21	349.99
	6 IN EN	50	64150	49.50	473.15	1140.42
	6 FE EN	100	64205	23.98	229.25	552.56
	6 AL EN	100	64206	25.82	246.85	594.98
	6 CU EN	100	64207	25.82	246.85	594.98
	6 TI EN	100	64208	116.11	1109.85	2675.02
	6 SS EN	100	64147	25.82	246.85	594.98
	6 IN EN	100	64139	84.14	804.30	1938.57

Steel (FE), Stainless Steel (SS), Aluminium (AL), Copper (CU), ICONEL 600 (IN), Titanium (TI).

- ✓ Savings can be achieved by purchasing RADAC® Image Quality Indicators in packs of 10 or 25 as the higher pack sizes result in a lower unit cost.



The Premier Manufacturer of High Quality Accessories for Industrial Radiography

## RADAC® Image Quality Indicators

### European Standard EN 462-1: 1994 / ISO 19232-1-2013 Wire TYPE Image Quality Indicators

#### 6 EN Types and Prices £GBP

Standard EN462-1	Type	2.5mm wire spacing			Price £ GBP		
		Wire Length (mm)	Cat No	Each	10 Pack	25 Pack	
					10	25	
	6 FE EN	10	64157/25	15.55	148.65	358.29	
	6 AL EN	10	64158/25	16.63	158.99	383.21	
	6 CU EN	10	64159/25	16.63	158.99	383.21	
	6 TI EN	10	64141/25	69.74	666.60	1606.67	
	6 SS EN	10	64144/25	16.63	158.99	383.21	
	6 IN EN	10	64148/25	50.94	486.94	1173.64	
	6 FE EN	25	64154/25	15.55	148.65	358.29	
	6 AL EN	25	64155/25	16.63	158.99	383.21	
	6 CU EN	25	64156/25	16.63	158.99	383.21	
	6 TI EN	25	64142/25	69.74	666.60	1606.67	
	6 SS EN	25	64145/25	16.63	158.99	383.21	
	6 IN EN	25	64149/25	50.94	486.94	1173.64	
	6 FE EN	50	64151/25	15.55	148.65	358.29	
	6 AL EN	50	64152/25	16.63	158.99	383.21	
	6 CU EN	50	64153/25	16.63	158.99	383.21	
	6 TI EN	50	64143/25	69.74	666.60	1606.67	
	6 SS EN	50	64146/25	16.63	158.99	383.21	
	6 IN EN	50	64150/25	50.94	486.94	1173.64	
	6 FE EN	100	64209	25.43	243.04	585.78	
	6 AL EN	100	64210	27.27	260.63	628.20	
	6 CU EN	100	64211	27.27	260.63	628.20	
	6 TI EN	100	64212	117.55	1123.63	2708.24	
	6 SS EN	100	64147/25	27.27	260.63	628.20	
	6 IN EN	100	64139/25	85.58	818.08	1971.79	

Steel (FE), Stainless Steel (SS), Aluminium (AL), Copper (CU), ICONEL 600 (IN), Titanium (TI).

- ✓ Savings can be achieved by purchasing RADAC® Image Quality Indicators in packs of 10 or 25 as the higher pack sizes result in a lower unit cost.



The Premier Manufacturer of High Quality Accessories for Industrial Radiography

## RADAC® Image Quality Indicators

### European Standard EN 462-1: 1994 / ISO 19232-1-2013 Wire TYPE Image Quality Indicators

#### 10 EN Types and Prices £GBP

5mm wire spacing						
Standard EN462-1	Type	Wire Length (mm)	Cat No	Price £ GBP		
				Each	10 Pack	25 Pack
	10 FE EN	10	64097	14.11	134.87	325.07
	10 AL EN	10	64098	15.19	145.21	349.99
	10 CU EN	10	64099	15.19	145.21	349.99
	10 TI EN	10	64113	68.29	652.82	1573.45
	10 SS EN	10	64138	15.19	145.21	349.99
	10 IN EN	10	64137	49.50	473.15	1140.42
	10 FE EN	25	64094	14.11	134.87	325.07
	10 AL EN	25	64095	15.19	145.21	349.99
	10 CU EN	25	64096	15.19	145.21	349.99
	10 TI EN	25	64112	68.29	652.82	1573.45
	10 SS EN	25	64136	15.19	145.21	349.99
	10 IN EN	25	64135	49.50	473.15	1140.42
	10 FE EN	50	64091	14.11	134.87	325.07
	10 AL EN	50	64092	15.19	145.21	349.99
	10 CU EN	50	64093	15.19	145.21	349.99
	10 TI EN	50	64113	68.29	652.82	1573.45
	10 SS EN	50	64134	15.19	145.21	349.99
	10 IN EN	50	64133	49.50	473.15	1140.42
	10 FE EN	100	64201	23.98	229.25	552.56
	10 AL EN	100	64202	25.82	246.85	594.98
	10 CU EN	100	64203	25.82	246.85	594.98
	10 TI EN	100	64204	116.11	1109.85	2675.02
	10 SS EN	100	64132	25.82	246.85	594.98
	10 IN EN	100	64131	84.14	804.30	1938.57

Steel (FE), Stainless Steel (SS), Aluminium (AL), Copper (CU), ICONEL 600 (IN), Titanium (TI).

- ✓ Savings can be achieved by purchasing RADAC® Image Quality Indicators in packs of 10 or 25 as the higher pack sizes result in a lower unit cost.



The Premier Manufacturer of High Quality Accessories for Industrial Radiography

## RADAC® Image Quality Indicators

### European Standard EN 462-1: 1994 / ISO 19232-1-2013 Wire TYPE Image Quality Indicators

#### 10 EN Types and Prices £GBP

Standard EN462-1	Type	2.5mm wire spacing			Price £ GBP		
		Wire Length (mm)	Cat No	Each	10 Pack	25 Pack	
					10	25	
	10 FE EN	10	64097-2.5	15.60	149.09	359.34	
	10 AL EN	10	64098-2.5	16.68	159.45	384.32	
	10 CU EN	10	64099-2.5	16.68	159.45	384.32	
	10 TI EN	10	64111-2.5	69.94	668.55	1611.37	
	10 SS EN	10	64138-2.5	16.68	159.45	384.32	
	10 IN EN	10	64137-2.5	51.09	488.36	1177.07	
	10 FE EN	25	64094-2.5	15.60	149.09	359.34	
	10 AL EN	25	64095-2.5	16.68	159.45	384.32	
	10 CU EN	25	64096-2.5	16.68	159.45	384.32	
	10 TI EN	25	64112-2.5	69.94	668.55	1611.37	
	10 SS EN	25	64136-2.5	16.68	159.45	384.32	
	10 IN EN	25	64135-2.5	51.09	488.36	1177.07	
	10 FE EN	50	64091-2.5	15.60	149.09	359.34	
	10 AL EN	50	64092-2.5	16.68	159.45	384.32	
	10 CU EN	50	64093-2.5	16.68	159.45	384.32	
	10 TI EN	50	64113-2.5	69.94	668.55	1611.37	
	10 SS EN	50	64134-2.5	16.68	159.45	384.32	
	10 IN EN	50	64133-2.5	51.09	488.36	1177.07	
	10 FE EN	100	64213-2.5	25.50	243.75	587.49	
	10 AL EN	100	64214-2.5	27.35	261.40	630.03	
	10 CU EN	100	64215-2.5	27.35	261.40	630.03	
	10 TI EN	100	64216-2.5	117.89	1126.91	2716.15	
	10 SS EN	100	64132-2.5	27.35	261.40	630.03	
	10 IN EN	100	64131-2.5	85.83	820.47	1977.55	

Steel (FE), Stainless Steel (SS), Aluminium (AL), Copper (CU), ICONEL 600 (IN), Titanium (TI).

- ✓ Savings can be achieved by purchasing RADAC® Image Quality Indicators in packs of 10 or 25 as the higher pack sizes result in a lower unit cost.





The Premier Manufacturer of High Quality Accessories for Industrial Radiography

## RADAC® Image Quality Indicators

### European Standard EN 462-1: 1994 / ISO 19232-1-2013 Wire TYPE Image Quality Indicators

#### 13 EN Types and Prices £GBP

5mm wire spacing						
Standard EN462-1	Type	Wire Length (mm)	Cat No	Price £ GBP		
				Each	10 Pack	25 Pack
	13 FE EN	10	64087	15.90	151.98	366.30
	13 AL EN	10	64088	16.98	162.31	391.21
	13 CU EN	10	64089	16.98	162.31	391.21
	13 TI EN	10	64101	70.08	669.92	1614.68
	13 SS EN	10	64130	16.98	162.31	391.21
	13 IN EN	10	64129	51.29	490.26	1181.65
	13 FE EN	25	64084	15.90	151.98	366.30
	13 AL EN	25	64085	16.98	162.31	391.21
	13 CU EN	25	64086	16.98	162.31	391.21
	13 TI EN	25	64102	70.08	669.92	1614.68
	13 SS EN	25	64128	16.98	162.31	391.21
	13 IN EN	25	64127	51.29	490.26	1181.65
	13 FE EN	50	64081	15.90	151.98	366.30
	13 AL EN	50	64082	16.98	162.31	391.21
	13 CU EN	50	64083	16.98	162.31	391.21
	13 TI EN	50	64103	70.08	669.92	1614.68
	13 SS EN	50	64126	16.98	162.31	391.21
	13 IN EN	50	64100	51.29	490.26	1181.65
	13 FE EN	100	64071	25.77	246.36	593.79
	13 AL EN	100	64702	27.61	263.96	636.20
	13 CU EN	100	64703	27.61	263.96	636.20
	13 TI EN	100	64704	117.90	1126.95	2716.25
	13 SS EN	100	64124	27.61	263.96	636.20
	13 IN EN	100	64123	85.93	821.40	1979.79

Steel (FE), Stainless Steel (SS), Aluminium (AL), Copper (CU), ICONEL 600 (IN), Titanium (TI).

- ✓ Savings can be achieved by purchasing RADAC® Image Quality Indicators in packs of 10 or 25 as the higher pack sizes result in a lower unit cost.



The Premier Manufacturer of High Quality Accessories for Industrial Radiography

## RADAC® Image Quality Indicators

### European Standard EN 462-1: 1994 / ISO 19232-1-2013 Wire TYPE Image Quality Indicators

#### 13 EN Types and Prices £GBP

2.5mm wire spacing						
Standard EN462-1	Type	Wire Length (mm)	Cat No	Price £ GBP		
				Each	10 Pack	25 Pack
					10	25
	13 FE EN	10	64087/25	17.34	165.76	399.52
	13 AL EN	10	64088/25	18.42	176.09	424.43
	13 CU EN	10	64089/25	18.42	176.09	424.43
	13 TI EN	10	64101/25	71.53	683.70	1647.90
	13 SS EN	10	64130/25	18.42	176.09	424.43
	13 IN EN	10	64129/25	52.73	504.04	1214.87
	13 FE EN	25	64084/25	17.34	165.76	399.52
	13 AL EN	25	64085/25	18.42	176.09	424.43
	13 CU EN	25	64086/25	18.42	176.09	424.43
	13 TI EN	25	64102/25	71.53	683.70	1647.90
	13 SS EN	25	64128/25	18.42	176.09	424.43
	13 IN EN	25	64127/25	52.73	504.04	1214.87
	13 FE EN	50	64081/25	17.34	165.76	399.52
	13 AL EN	50	64082/25	18.42	176.09	424.43
	13 CU EN	50	64083/25	18.42	176.09	424.43
	13 TI EN	50	64103/25	71.53	683.70	1647.90
	13 SS EN	50	64126/25	18.42	176.09	424.43
	13 IN EN	50	64100/25	52.73	504.04	1214.87
	13 FE EN	100	64217	27.21	260.14	627.01
	13 AL EN	100	64218	29.06	277.74	669.42
	13 CU EN	100	64219	29.06	277.74	669.42
	13 TI EN	100	64220	119.34	1140.74	2749.47
	13 SS EN	100	64124/25	29.06	277.74	669.42
	13 IN EN	100	64123/25	87.37	835.19	2013.01

Steel (FE), Stainless Steel (SS), Aluminium (AL), Copper (CU), ICONEL 600 (IN), Titanium (TI).

- ✓ Savings can be achieved by purchasing RADAC® Image Quality Indicators in packs of 10 or 25 as the higher pack sizes result in a lower unit cost



*The Premier Manufacturer of High Quality Accessories for Industrial Radiography*

## **RADAC® Image Quality Indicators**

### **ASTM E747-18 / ASME SE747-97a (Wire Type) Penetrameters**

#### **Construction**

Each indicator consists of a series of six parallel wire of different thicknesses 25 or 50mm long, mounted between two thin sheets of transparent flexible PVC. Lead characters identify the wire thicknesses and the material. The letters ASTM are also included.

#### **Wire diameters (mm)**

Set A	0.08	0.10	0.13	0.16	0.20	0.25
Set B	0.25	0.33	0.40	0.51	0.64	0.81
Set C	0.81	1.02	1.27	1.60	2.03	2.50
Set D	2.50	3.20	4.06	5.10	6.40	8.00

Sets A, B and C are produced with wires of either 25mm , 50mm or 100mm long.

Sets A, B and C have a serial number for Quality Assurance and Conformity purposes. From this number we can trace records of the actual measured wire diameters, materials used in production and the date of manufacture.

Nickel – Chromium – (Inconel) alloy Image Quality Indicators are manufactured with Inconel 600 alloy wire.



The Premier Manufacturer of High Quality Accessories for Industrial Radiography

## RADAC® Image Quality Indicators

### ASTM E747-18 / ASME SE747-97a (Wire Type) Penetrameters

25mm Wire length						
Material Group	Wire Set / Material Type	Wire Length (mm)	Cat No	Price £ GBP		
				Each	10 Pack	25 Pack
1	Set A FE	25	73181	17.75	169.70	409.01
1	Set B FE	25	73182	17.75	169.70	409.01
1	Set C FE	25	63383	19.17	183.23	441.64
1	Set A SS	25	63310	18.55	177.32	427.40
1	Set B SS	25	63311	18.55	177.32	427.40
1	Set C SS	25	63312	26.84	256.57	618.41
02	Set A AL	25	63385	18.55	177.32	427.40
02	Set B AL	25	63386	18.55	177.32	427.40
02	Set C AL	25	63387	26.84	256.57	618.41
4	Set A CU	25	63388	19.48	186.18	448.75
4	Set B CU	25	63389	19.48	186.18	448.75
01	Set A TI	25	63391	70.78	676.57	1630.70
01	Set B TI	25	63392	70.78	676.57	1630.70
3	Set A IN	25	63397	47.47	453.71	1093.56
3	Set B IN	25	63398	47.47	453.71	1093.56

Steel (FE), Stainless Steel (SS), Aluminium (AL), Copper (CU), ICONEL 600 (IN), Titanium (TI).

- ✓ Savings can be achieved by purchasing RADAC® Image Quality Indicators in packs of 10 or 25 as the higher pack sizes result in a lower unit cost.



The Premier Manufacturer of High Quality Accessories for Industrial Radiography

## RADAC® Image Quality Indicators

### ASTM E747-18 / ASME SE747-97a (Wire Type) Penetrameters

50mm Wire length						
Material Group	Wire Set / Material Type	Wire Length (mm)	Cat No	Price £ GBP		
				Each	10 Pack	25 Pack
1	Set A FE	50	63181	17.75	169.70	409.01
1	Set B FE	50	63182	17.75	169.70	409.01
1	Set C FE	50	63183	19.17	183.23	441.64
1	Set A SS	50	63210	18.55	177.32	427.40
1	Set B SS	50	63211	18.55	177.32	427.40
1	Set C SS	50	63212	26.84	256.57	618.41
02	Set A AL	50	63185	18.55	177.32	427.40
02	Set B AL	50	63186	18.55	177.32	427.40
02	Set C AL	50	63187	26.84	256.57	618.41
4	Set A CU	50	63188	19.48	186.18	448.75
4	Set B CU	50	63189	19.48	186.18	448.75
01	Set A TI	50	63191	70.78	676.57	1630.70
01	Set B TI	50	63192	70.78	676.57	1630.70
3	Set A IN	50	63197	47.47	453.71	1093.56
3	Set B IN	50	63198	47.47	453.71	1093.56

Steel (FE), Stainless Steel (SS), Aluminium (AL), Copper (CU), ICONEL 600 (IN), Titanium (TI).

- ✓ Savings can be achieved by purchasing RADAC® Image Quality Indicators in packs of 10 or 25 as the higher pack sizes result in a lower unit cost.



The Premier Manufacturer of High Quality Accessories for Industrial Radiography

## RADAC® Image Quality Indicators ASTM E747-18 / ASME SE747-97a (Wire Type) Penetrameters

100mm Wire Length						
Material Group	Wire Set / Material Type	Wire Length (mm)	Cat No	Price £ GBP		
				Each	10 Pack	25 Pack
					10	25
1	Set A FE	100	63199	30.51	291.64	702.94
1	Set B FE	100	63200	30.51	291.64	702.94
1	Set A SS	100	63213	31.89	304.81	734.67
1	Set B SS	100	63214	31.89	304.81	734.67
02	Set A AL	100	63201	31.89	304.81	734.67
02	Set B AL	100	63202	31.89	304.81	734.67
4	Set A CU	100	63203	33.48	320.07	771.45
4	Set B CU	100	63204	33.48	320.07	771.45
01	Set A TI	100	63205	121.68	1163.13	2803.45
01	Set B TI	100	63206	121.68	1163.13	2803.45
3	Set A IN	100	63207	80.29	767.51	1849.88
3	Set B IN	100	63208	80.29	767.51	1849.88

Steel (FE), Stainless Steel (SS), Aluminium (AL), Copper (CU), ICONEL 600 (IN), Titanium (TI).

- ✓ Savings can be achieved by purchasing RADAC® Image Quality Indicators in packs of 10 or 25 as the higher pack sizes result in a lower unit cost.



*The Premier Manufacturer of High Quality Accessories for Industrial Radiography*

## Lead Identification Markers

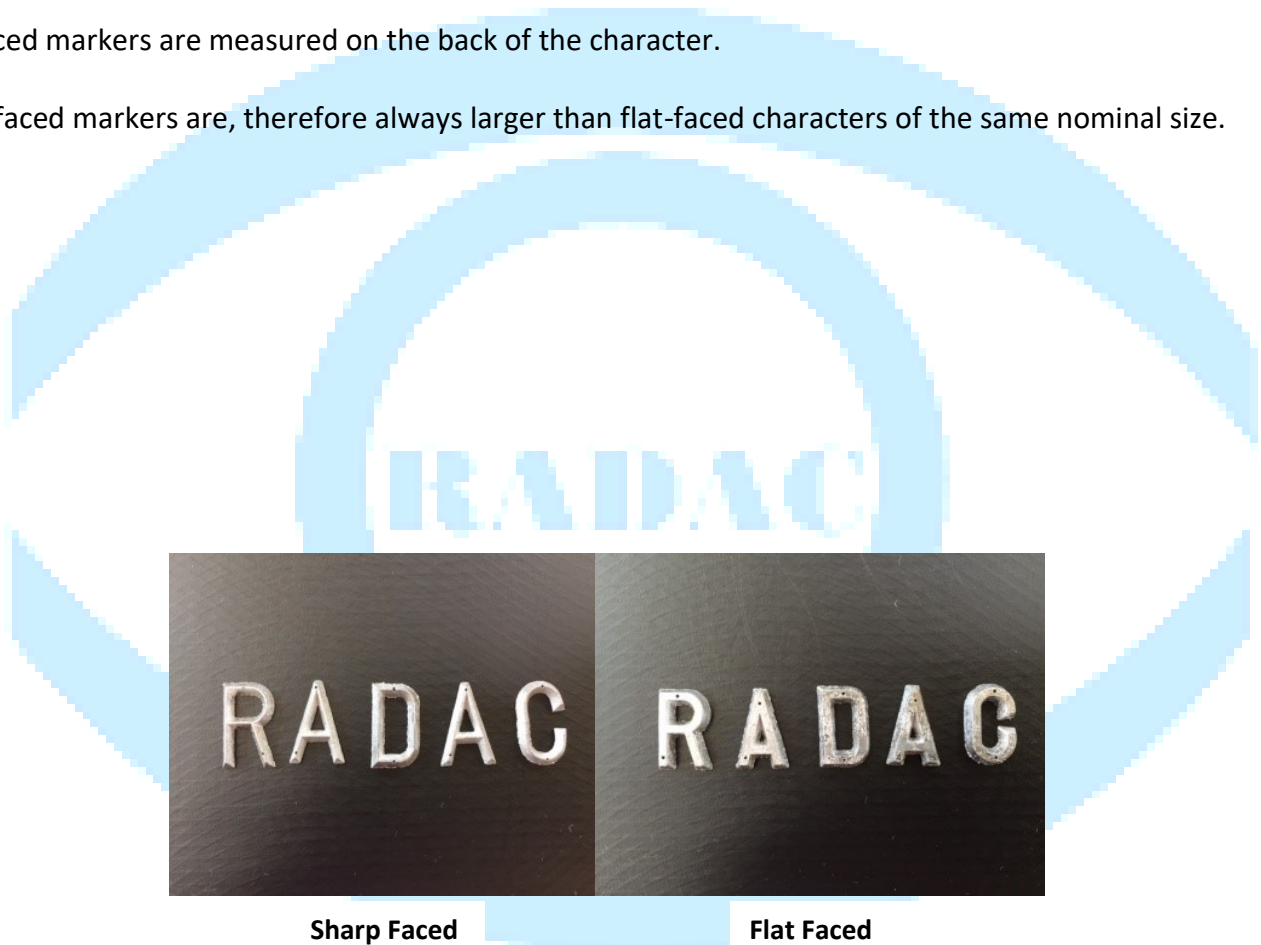
RADAC lead markers are available in two styles. Sharp faced markers are generally used for x-radiography and produce a well-defined, clean image on the film. The flat face style has greater bulk for use with the more penetrating gamma radiations.

The characters available are arrows, (sharp faced only), capital letters and numerals.

Sharp-faced markers are measured with reference to the front, sharp face of the character.

Flat-faced markers are measured on the back of the character.

Sharp-faced markers are, therefore always larger than flat-faced characters of the same nominal size.





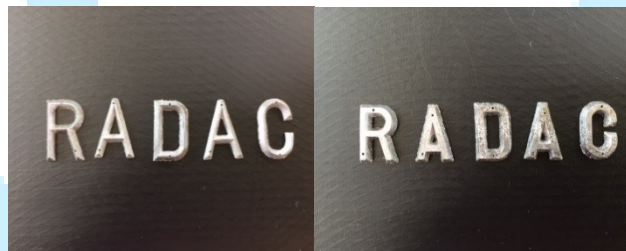
The Premier Manufacturer of High Quality Accessories for Industrial Radiography

## Lead Identification Markers

### Unmounted

Sharp Faced Unmounted				
Size (mm)	CAT No	Price £		
		Per 10 Pack	Per 100 Pack	
		10	100	
6.3	60606	2.13	15.88	
9.5	60609	3.02	23.62	
12.5	60612	4.51	34.59	
19.5	60619	7.85	60.69	

Flat Faced Unmounted				
Size (mm)	CAT No	Price £		
		Per 10 Pack	Per 100 Pack	
		10	100	
6.3	60607	2.85	21.04	
9.5	60610	3.73	28.45	
12.5	60613	5.23	39.09	
19.5	60620	9.71	75.40	



Un-mounted  
Sharp Faced

Un-mounted  
Flat Faced

- ✓ Full range available - characters A-Z and numbers 0-9 in sizes from 6.3 to 19.5mm.
- ✓ RADAC® Markers come in packs of 10 or 100 pieces containing the same Character or Number type of the size ordered.
- ✓ Savings can be achieved by purchasing RADAC® Markers in packs of 100 as the higher pack sizes result in a lower unit cost.





*The Premier Manufacturer of High Quality Accessories for Industrial Radiography*

## **RADAC® Radiation Warning Signs**

### **Radiation Warning Signs**

- ✓ **Quality Assured** – the best materials and manufacturing techniques combined with rigorous quality control throughout the production process ensures that RADAC signs are free from defects.
- ✓ **Weather Proof** - RADAC signs are printed with premium quality EN71 approved outdoor use inks directly onto the high-quality backing materials.
- ✓ **Durable** - RADAC warning signs are available printed on high quality rigid aluminium composite laminate, flexible PVC or self-adhesive vinyl backing materials.
- ✓ **Full product range available in any language** – RADAC warning signs can be printed in any language.
- ✓ **Customisable** – bespoke signs manufactured to your requirements in either laminate or in flexible, self-adhesive plastic.
- ✓ **Meets relevant standards** - RADAC signs conform to the current ionising radiations regulations.





The Premier Manufacturer of High Quality Accessories for Industrial Radiography

## RADAC® Radiation Warning Signs

### Product Features



RADAC signs are available printed on a high-quality rigid aluminium composite laminate with radius corners. Contact [sales@radac.co.uk](mailto:sales@radac.co.uk) for a quote.



RADAC weather proof flexible PVC warning pennants with welded VELCRO® brand fastening for ease of fitment and removal



RADAC warning pennant with welded top channel



Printed with outdoor grade inks on high quality nylon reinforced PVC, RADAC's durable pennants and banners are manufactured to last.



*The Premier Manufacturer of High Quality Accessories for Industrial Radiography*

## **RADAC® Radiation Warning Pennants**



**Size 205 x 285mm (CAT Nos. 70735 / 36)**

Rectangular weather proof warning pennants manufactured in flexible PVC for use with a barrier rope.

These pennants are available with either a welded top channel for threading onto a barrier rope or with a VELCRO® brand fastening for ease of fitment and removal.

**70735 (Welded)**

**70736 (VELCRO® Brand Fastening)**



**70708 (Welded)**

**70709 (VELCRO® Brand Fastening)**



The Premier Manufacturer of High Quality Accessories for Industrial Radiography

## RADAC® Radiation Warning Pennants



### Size 205 x 285mm (CAT Nos. 70710 / 11)

Rectangular weather proof warning pennants produced to USA standard, in flexible PVC for use with a barrier rope.

These pennants are available with either a welded top channel for threading onto a barrier rope or with a VELCRO® brand fastening for ease of fitment and removal.

70710 (Welded)

70711 (VELCRO® Brand Fastening)

Radiation Warning Pennants Prices				
Price £ GBP				
CAT No	Size (mm)	Each	10 Pack 10	25 Pack 25
70735	205 x 285	3.32	32.90	80.28
70736	205 x 285	4.82	47.90	116.87
70708	205 x 285	3.32	32.90	80.28
70709	205 x 285	4.82	47.90	116.87
70710	205 x 285	3.32	32.90	80.28
70711	205 x 285	4.82	47.90	116.87

- ✓ Savings can be achieved by purchasing RADAC® Radiation Warning Pennants in packs of 10 or 25 as the higher pack sizes result in a lower unit cost.



The Premier Manufacturer of High Quality Accessories for Industrial Radiography

## RADAC® Vehicle Warning Signs

RADAC's range of vehicle warning signs are manufactured in accordance with The Radioactive Material (ROAD TRANSPORT) Regulations 2002. Produced with high quality outdoor grade inks and durable backing materials.

Size 250 x 250 mm

(Cat No's 7015/16/17)

70715 Magnetic

70716 Self - Adhesive

70717 Rigid



Size 250 x 250 mm

(Cat No's 7015-2/16-2/17-2)

70715-2 Magnetic

70716-2 Self - Adhesive

70717-2 Rigid



Size 300 x 250 mm

Cat No 70718

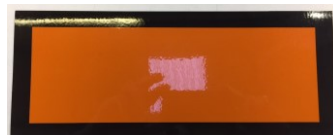
70718 Magnetic



Size 300 x 120 mm

Cat No 70719

70719 Magnetic





The Premier Manufacturer of High Quality Accessories for Industrial Radiography

## RADAC® Vehicle Warning Signs

Vehicle Warning Signs Prices				
Price £ GBP				
CAT No	Size (mm)	Each	10 Pack 10	25 Pack 25
70715	250 x 250	16.95	164.50	387.30
70716	250 x 250	4.08	39.69	93.45
70717	250 x 250	10.84	105.28	247.84
70715/2	250 x 250	16.95	164.50	387.30
70716/2	250 x 250	4.08	39.69	93.45
70717/2	252 x 250	10.84	105.28	247.84
70718	300 x 250	31.87	309.72	728.94
70719	300 x 120	16.82	163.48	384.89

- ✓ Savings can be achieved by purchasing RADAC® Vehicle Warning Signs in packs of 10 or 25 as the higher pack sizes result in a lower unit cost.



The Premier Manufacturer of High Quality Accessories for Industrial Radiography

## RADAC® Interleaving Paper

Interleaving Paper is supplied in packs of 200 folders:

CAT Nos	Size (cm)	£ per pack	£ per 10 packs
10001	5 x 20	8.47	78.39
10002	5 x 40	14.38	133.09
10003	6 x 24	11.94	110.52
10004	7 x 48	15.94	147.44
10005	9 x 12	10.03	92.74
10006	10 x 20	14.22	131.49
10007	10 x 24	14.73	136.28
10008	10 x 40	18.72	173.07
10009	13 x 18	16.80	155.42
10010	15 x 40	23.91	221.16
10011	18 x 24	17.99	166.35
10012	18 x 43	26.66	246.68
10013	24 x 30	23.22	214.78
10014	30 x 40	31.87	294.76
10015	35 x 43	38.32	354.47
10016	10 x 48	24.94	230.73



- ✓ Savings can be achieved by purchasing RADAC® Interleaving Paper in packs of 10 as the higher pack size result in a lower unit cost per pack.





*The Premier Manufacturer of High Quality Accessories for Industrial Radiography*

## **RADAC® Computed Radiography Accessories**

### **RADAC® Copper Intensifying Screens and Copper Filters**

- ✓ **Quality Assured** – rigorous quality control throughout the production process ensures that RADAC screens are free from defects. RADAC Copper intensifying screens feature rounded corners to prevent damage to both films and cassettes.
- ✓ **Flexible**– the high quality backing used in the production of RADAC Copper intensifying screens means optimum flexibility is maintained.
- ✓ **Full range of cut sizes** – RADAC Copper Intensifying screens are available in thicknesses of 0.125 mm and 0.25mm, in all standard metric and imperial sizes up to 300mm / 12 inches wide, and are cut according to BS3490:1985 and ISO 5655-1982.
- ✓ **Custom sizes available** - -Bespoke non–standard size Copper screens can be manufactured to order.



**RADAC® Copper Intensifying Screen ( 0.125 mm)**





The Premier Manufacturer of High Quality Accessories for Industrial Radiography

## RADAC® Copper Intensifying Screens

Metric Sizes available in thickness 0.125mm and 0.25mm

Size (CM)	CAT	25 Pair Packs		CAT	10 Pair Packs		CAT	5 Pair Packs	
		CU125 0.125/0.125	CU250 0.25/0.25		CU125 0.125/0.125	CU250 0.25/0.25		CU125 0.125/0.125	CU250 0.25/0.25
5 x 20	200	142.27	216.84	900	69.28	99.11	500	44.95	59.86
5 x 40	201	232.42	366.94	901	108.10	161.90	501	66.64	93.82
6 x 24	202	194.09	307.45	902	91.12	136.18	502	56.78	79.46
6 x 40	203	292.34	472.86	903	133.28	205.49	503	80.29	116.38
6 x 48	204	333.00	545.08	904	150.10	234.92	504	89.11	131.52
7 x 40	205	349.29	571.28	905	157.31	246.10	505	93.30	137.70
7 x 48	206	400.10	661.54	906	178.28	282.86	506	104.34	156.64
9 x 12	207	187.41	294.21	907	88.60	131.33	507	55.66	77.01
10 x 20	208	232.42	366.94	908	108.10	161.90	508	66.64	93.56
10 x 24	209	262.25	419.55	909	120.41	183.34	509	73.13	104.60
10 x 40	210	399.98	654.35	910	178.74	280.47	510	104.98	155.84
10 x 48	211	459.66	759.62	911	203.36	323.34	511	117.94	177.93
13 x 18	212	306.21	492.08	912	139.46	213.80	512	83.86	121.03
15 x 40	213	561.91	936.11	913	246.24	395.93	513	141.04	215.86
18 x 24	214	539.52	896.66	914	237.02	379.87	514	136.18	209.03
18 x 43	215	766.45	1294.74	915	331.09	542.40	515	185.98	291.62
20 x 30	216	561.91	936.11	916	247.01	395.93	516	141.04	215.86
24 x 30	217	651.40	1093.99	917	283.20	460.24	517	160.47	249.00
30 x 40	218	1038.79	1772.60	918	443.98	737.49	518	245.70	392.45



The Premier Manufacturer of High Quality Accessories for Industrial Radiography

## RADAC® Copper Intensifying Screens

Inch Sizes available in thickness 0.125mm and 0.25mm

Size (In)	CAT	25 Pair Packs		CAT	10 Pair Packs		CAT	5 Pair Packs	
		0.125/0.125 CU125	0.25/0.25 CU250		0.125/0.125 CU125	0.25/0.25 CU250		0.125/0.125 CU125	0.25/0.25 CU250
3½ X 8½ in	<b>220</b>	213.80	339.52	<b>920</b>	99.77	150.06	<b>520</b>	61.76	86.90
3½ X 10 in	<b>221</b>	236.04	379.01	<b>921</b>	108.96	166.15	<b>521</b>	66.62	95.21
3½ X 17 in	<b>222</b>	368.35	605.13	<b>922</b>	165.18	259.89	<b>522</b>	97.44	144.80
4 X 10 in	<b>223</b>	269.72	432.72	<b>923</b>	123.47	188.68	<b>523</b>	74.74	107.36
4 X 15 in	<b>224</b>	385.07	628.03	<b>924</b>	172.56	269.74	<b>524</b>	101.73	150.32
4½ X 8½ in	<b>225</b>	266.39	429.12	<b>925</b>	122.16	187.27	<b>525</b>	74.09	106.64
4½ X 10 in	<b>226</b>	296.04	481.79	<b>926</b>	134.39	208.72	<b>526</b>	80.55	117.68
4½ X 11 in	<b>227</b>	362.13	590.77	<b>927</b>	162.53	254.00	<b>527</b>	96.01	141.72
4½ X 17 in	<b>228</b>	467.92	778.75	<b>928</b>	206.88	331.21	<b>528</b>	119.86	182.02
7 X 17 in	<b>229</b>	663.81	1122.73	<b>929</b>	288.46	472.02	<b>529</b>	163.34	255.13
8 X 10 in	<b>230</b>	561.91	936.11	<b>930</b>	246.24	395.93	<b>530</b>	141.04	215.86
10 X 12 in	<b>231</b>	673.78	1133.48	<b>931</b>	292.44	476.30	<b>531</b>	165.33	257.28



*The Premier Manufacturer of High Quality Accessories for Industrial Radiography*

## **RADAC® Computed Radiography Custom Size Imaging Plate Protectors**

Designed to reduce the risk of accidental damage and scratching during use and storage of the Imaging Plate.

RADAC Custom size Imaging Plate Protectors will help prolong the life of your Flexible Imaging Plate reducing the whole life shot cost.

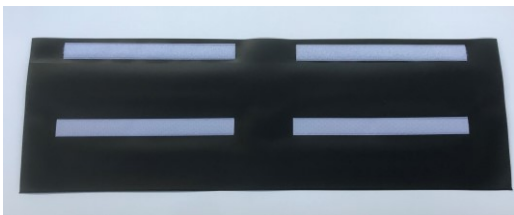
Manufactured to order the custom sized Imaging Plate Protectors can be produced in sizes up to 300cm long.

**RADAC® short side opening imaging plate protector**



For use with the longer imaging plates the long side opening protectors are designed to reduce the risk of scratching whilst loading and unloading the plate.

**RADAC® long side opening imaging plate protector**



**RADAC® long side opening imaging plate protector**



RADAC Custom size Imaging Plate Protectors can be manufactured in either 300 micron (recommended for use) or 400 micron (recommended for storage) lightproof PVC.

- ✓ **Reduced the risk of accidental damage to your Imaging Plate during use** - specifically designed for use with flexible Imaging Plates. Designed to provide protection from scratching and accidental damage in use without compromising image quality.



*The Premier Manufacturer of High Quality Accessories for Industrial Radiography*

## **RADAC® Computed Radiography Cassettes / Flexible Imaging Plate Protectors**

- ✓ **Quality Assured** – RADAC's use of the best materials and manufacturing techniques combined with rigorous quality control throughout the production process ensures that RADAC cassettes are free from defects.
- ✓ **Reduced the risk of accidental damage to your Imaging Plate during use** - specifically designed for use with flexible Imaging Plates. Designed to provide protection from scratching and accidental damage in use without compromising image quality.
- ✓ **Product Features** – manufactured from RADAC's specially formulated 300-micron PVC, produced with open end and thumb-notch cut out to aid loading and unloading of the imaging plate. They are also available with printed central alignment marks.
- ✓ **Full range in all popular Imperial and Metric and Sizes**



Designed to reduce the risk of accidental damage and scratching during use of the Imaging Plate.

RADAC Imaging Plate holders / cassettes will help prolong the life of your Flexible Imaging Plate reducing the whole life shot cost.

Manufactured to accommodate all popular standard size Flexible Imaging Plates.

Designed for use where protection from the operating environment may be required but full light tightness is not essential, RADAC cassettes feature an open end without closure and a thumb notch cut out for ease of loading and unloading without damaging the Imaging Plate.

Produced in RADAC's own specially formulated 300-micron PVC to ensure image quality is not compromised.



The Premier Manufacturer of High Quality Accessories for Industrial Radiography

## RADAC® Flexible Imaging Plate Protectors Metric Sizes

Metric Sizes		No Line		With Line	
Size (cm)	Cat No	10 pack 5010	25 pack 5025	10 pack 5010L	25 pack 5025L
5 x 20	<b>400</b>	26.19	63.91	31.78	77.90
5 x 40	<b>401</b>	30.66	74.82	36.25	88.81
6 x 24	<b>402</b>	29.70	72.48	35.30	86.47
6 x 40	<b>403</b>	34.01	83.00	39.61	96.99
6 x 48	<b>404</b>	35.93	87.68	41.52	101.67
7 x 40	<b>405</b>	36.40	88.85	42.00	102.84
7 x 48	<b>406</b>	38.80	94.69	44.40	108.68
9 x 12	<b>407</b>	32.41	79.10	38.01	93.10
10 x 20	<b>408</b>	37.20	90.79	42.80	104.79
10 x 24	<b>409</b>	38.32	93.52	43.92	107.51
10 x 40	<b>410</b>	43.75	106.77	49.35	120.76
10 x 48	<b>411</b>	47.42	115.73	53.02	129.73
13 x 18	<b>412</b>	42.63	104.04	48.23	118.04
15 x 40	<b>413</b>	59.72	145.74	65.31	159.73
18 x 24	<b>414</b>	58.44	142.62	64.04	156.61
18 x 43	<b>415</b>	68.34	166.78	73.93	180.77
20 x 30	<b>416</b>	67.86	165.61	73.46	179.60
24 x 30	<b>417</b>	80.47	196.40	86.07	210.39
30 x 40	<b>418</b>	103.62	252.90	109.22	266.89
35 x 43	<b>419</b>	125.66	306.67	131.26	320.67



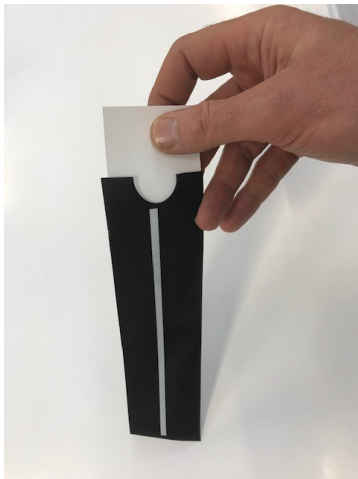
Open end with thumb notch cut out



The Premier Manufacturer of High Quality Accessories for Industrial Radiography

## RADAC® Flexible Imaging Plate Holder Inch Sizes

Inch Sizes	Cat No	No Line		With Line	
		10 pack	25 pack	10 pack	25 pack
Size (inch)	Cat No	5010	5025	5010L	5025L
3½ x 8½	<b>420</b>	33.69	82.21	39.28	96.20
3½ x 10	<b>421</b>	35.12	85.70	40.71	99.69
3½ x 17	<b>422</b>	40.36	98.50	45.96	112.49
4 x 10	<b>423</b>	38.61	94.23	44.21	108.22
4 x 15	<b>424</b>	43.70	106.64	49.29	120.63
4½ x 8½	<b>425</b>	39.72	96.95	45.32	110.94
4½ x 10	<b>426</b>	41.79	101.99	47.39	115.98
4½ x 11	<b>427</b>	42.74	104.31	48.34	118.31
4½ x 17	<b>428</b>	48.78	119.05	54.38	133.04
7 x 17	<b>429</b>	66.42	162.09	72.02	176.09
8 x 10	<b>430</b>	63.08	153.95	68.68	167.94
10 x 12	<b>431</b>	81.99	200.10	87.59	214.09
12 x 15	<b>432</b>	103.12	251.67	108.72	265.66
14 x 17	<b>433</b>	125.21	305.57	130.81	319.56



Cut out for easy loading / unloading



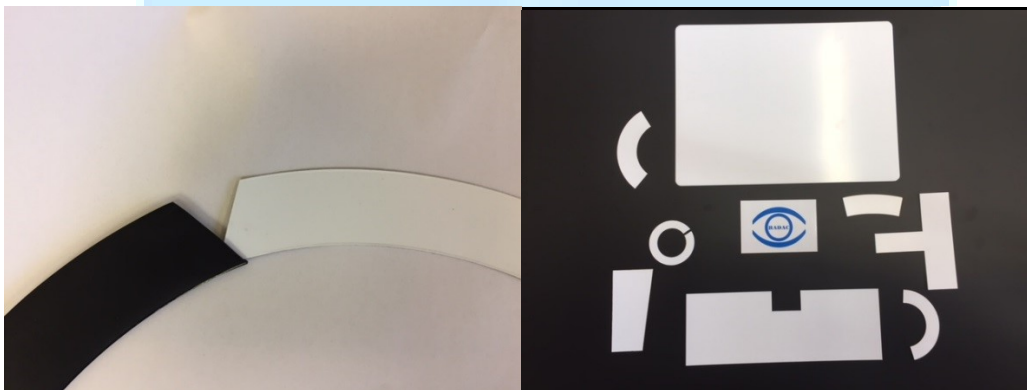
With central alignment line



*The Premier Manufacturer of High Quality Accessories for Industrial Radiography*

## **RADAC® Computed Radiography Custom Sized and Shaped Flexible Imaging Plates and matching plate protectors**

- ✓ **Quality Assured** – RADAC's use of the best materials and manufacturing techniques combined with rigorous quality control throughout the production process ensures that RADAC cassettes are free from defects.
- ✓ **Bespoke “Special” sizes** – RADAC can manufacture custom sized and irregular shaped flexible Imaging Plates with matching covers in any shape to meet your requirements specification.
- ✓ **Standardization** – RADAC custom shaped and sized Imaging Plates are machine cut ensuring that each plate is the same size
- ✓ **Lower whole life cost** – Pro-long the serviceable life and Protect your custom flexible Imaging Plates from scratching and accidental damage in use by ordering RADAC's matching plate protectors.
- ✓ **Precision made** – RADAC are the leading manufacturer of bespoke precision made custom sized and shaped Imaging Plates, being manufactured to fine tolerances they are widely used and relied upon in the following fields:
  - Nuclear Industry
  - Aircraft engines
  - General Engineering
  - Pressure Vessels



RADAC custom flexible Imaging Plates and example RADAC with matching plate protector



The Premier Manufacturer of High Quality Accessories for Industrial Radiography

## RADAC® RADVIEW LED X-Ray Film Viewer



High quality construction.

Excellent luminance.

Energy efficient low power consumption.

Easily portable, light weight weighing just 3kg with dimensions of 39cm x 18cm x 5cm the compact RADVIEW LED X-Ray film viewer provides outstanding performance.



Instant full light no need to warm up

High luminance typical  $L_{Max} \geq 120,000 \text{ Cd/m}^2$

Maximum density 4.1 D

Cool operation low surface temperature

A high-quality aluminium finned heatsink disperses heat from the LED's ensuring optimum performance is maintained however long the RADVIEW is in operation.



Foot switch and adjustable dimmer control

Compliant with the following standards: ISO 5580, EN25580, EN55014, EN60335-1, ASTM E 1390

Supplied with an EC Declaration of Conformity according to ISO/IEC 17050-1





*The Premier Manufacturer of High Quality Accessories for Industrial Radiography*

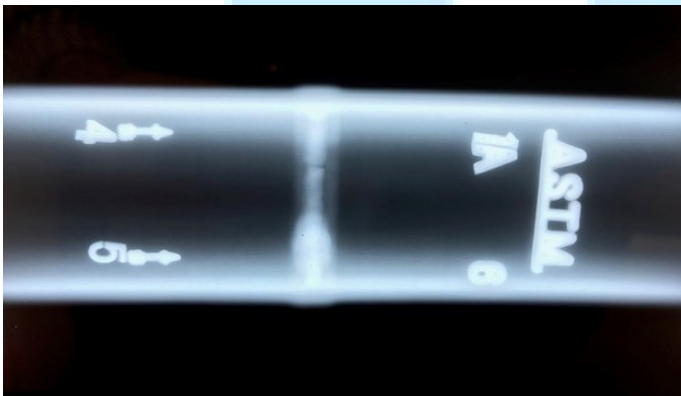
## **RADAC® Referenced Radiographs**

RADAC Referenced Radiographs are specifically designed for training, learning and development.

The referenced radiographs display real examples of welding defects, mechanical defects and processing marks. The defects have been intentionally produced to make it easier to learn and interpret the different defect types.

When the referenced radiographs are placed on a film viewer for inspection areas of the object where the thickness has been changed by discontinuities, such as porosity or cracks, will appear as dark outlines on the film. Inclusions of low density, such as slag, will appear as dark areas on the film while inclusions of high density, such as tungsten, will appear as light areas.

Each radiograph is supplied with a corresponding master report detailing the defect type, defect size, location and inclusion of any artefacts to assist the student's ability to correctly interpret the radiograph and defect characterisation.



Example of referenced radiograph showing of a carbon steel pipe TIG weld with excess penetration and porosity

All samples used to produce the standard set of RADAC referenced radiographs are in carbon steel pipe and plate. Each set contains 20 films, showing a minimum of 20 defects and a minimum of 6 processing defects along with corresponding master reports, 10 copies of an example student report template and a defect reference grid showing clear examples of what each defect would look like within a radiograph.

RADAC referenced radiographs are also available in bespoke sets for example pipe only, plate only, and different density material to meet individual customer requirements.



*The Premier Manufacturer of High Quality Accessories for Industrial Radiography*

## **Terms and Conditions**

### **1. Application and Entire Agreement**

**1.1** These Terms and Conditions will apply to the purchase of the goods detailed in our quotation ("Goods") to the buyer / purchaser (the "Customer") from Radiographic Accessories Limited a company registered in England under number 2904032 whose registered office is at 35 Northfield Way, Aycliffe Business Park, Newton Aycliffe, England. ("We" or "Us")

**1.2** These Terms and Conditions will be deemed to have been accepted by you when you accept them or the quotation or from the date any delivery of the Goods (whichever happens earlier) and will constitute the entire agreement between Us and the Customer.

**1.3** These Terms and Conditions (together the Contract) apply to the purchase and sale of any Goods between Us and the Customer, to the exclusion of any other terms that you try to impose or incorporate, or which are implied by trade, custom, practice or course of dealing.

### **2. General**

**2.2** Radiographic Accessories Limited is the owner and sole manufacturer of the famous RADAC brand products. RADAC® is a registered trade mark owned by Radiographic Accessories Limited.

**2.3** All orders for products and services as displayed on the RADAC website at <http://radac.co.uk> or in the RADAC catalogue and accepted by Us are subject to these Terms and Conditions.

**2.4** All descriptions of the products and services contained on the RADAC website, RADAC catalogue or otherwise communicated to any buyer / purchaser of such products or services (the "Customer") are approximate only and shall not form any part of the contract between Us and the Customer. We shall not be liable to the Customer for any errors or omissions on the RADAC website, the RADAC catalogue or other product advertisements.

**2.4** We are a business-to-business supplier. The RADAC website and catalogue is intended for use by business customers and not by private individuals acting as consumers. Notwithstanding the foregoing, nothing in these Terms and Conditions shall affect the statutory rights of a Customer who deals as a consumer.

**2.5** No waiver by Us for any breach of the Contract by the Customer shall be considered as a waiver of any subsequent breach of the same or any other provision. If any provision of these Conditions is held by any competent authority to be invalid or unenforceable in whole or in part, the validity of the other provisions of these Conditions and the remainder of the provision in question shall not be affected thereby.

### **3. Interpretation**

**3.1** The headings in these Terms and Conditions are for convenience only and will not affect the interpretation.

**3.2** Words imparting the singular include the plural and vice-versa.



*The Premier Manufacturer of High Quality Accessories for Industrial Radiography*

#### **4. Price**

**4.1** Except as otherwise stated under the terms of any quotation or in any Price list provided by Us, and unless otherwise agreed in writing between Us and the Customer, all prices provided by Us are on an ex-works basis.

**4.2** The price of Goods or Services ("Price") is set out in our quotation current at the date of your order or such other price as we may agree in writing.

**4.3** You may be entitled to discounts. Any and all discounts will be at our discretion and may be withdrawn or modified at any time.

**4.4** The Price is exclusive of any fees for packaging and transportation / delivery.

**4.4** The Price is exclusive of any applicable Taxes or Levies that are imposed or charged by any competent authority.

**4.5** We may increase the Price prior to delivery if the cost of Goods to Us increases due to any factor outside of our control including, but not limited to, material cost, labour cost, exchange rates changes or changes to duties and delivery rates. Any increase in price under this clause will only take place after notification has been given.

#### **5. Order cancellation and alteration**

**5.1** Either party may cancel for any reason prior to an acceptance of a quotation and an order being placed and accepted.

**5.2** Our quotations are valid for a period of **30 days only** from the date shown in it unless expressly withdrawn by us at an earlier time or otherwise stated.

**5.3** We reserve the right to decline to trade with any company or person. We may decline to accept any order, whether or not payment has been received, by giving notice of non-acceptance to the Customer by telephone, email or facsimile within a reasonable period of receipt of the order by Us. Further, We may cancel orders which have been accepted by giving written notice of such cancellation to the Customer by telephone, email or facsimile within a reasonable period of receipt of the order by Us. If We reject or cancel an order for which payment has been taken, it will refund the amount to the Customer as soon as reasonably practicable.

**5.4** We may, at our discretion and in writing, allow an order to be cancelled subject to Us recovering the costs incurred from the Customer.

#### **6. Termination**

**6.1** We reserve the right to terminate the Contract where:

- i. The Customer commits a material breach of their obligations under these Terms and Conditions.
- ii. The Customer becomes, or in our reasonable opinion is about to become, subject of a bankruptcy order or take advantage of any other statutory provision for the relief of insolvent debtors.



*The Premier Manufacturer of High Quality Accessories for Industrial Radiography*

## **7. Delivery**

Any dates quoted for delivery of the Goods are approximate only. We shall not be liable for any delay in delivery of the Goods howsoever caused. Time for delivery shall not be of the essence unless previously agreed by Us in writing. The goods may be delivered by Us in advance of the quoted delivery date upon giving reasonable notice to the Customer.

## **8. Goods**

**8.1** The description of the Goods is set out in our sales documentation, unless expressly changed in our quotation. In accepting the quotation the Customer acknowledges that they have not relied upon any statement, promise or other representations about the Goods by Us. Descriptions of the Goods as set out in our sales documentation are intended as a guide only.

**8.2** We can make any changes to the specification of the Goods which are required to conform to any safety or other statutory or regulatory requirements.

## **9. Intellectual Property Rights**

**9.1** The Customer acknowledges that We own the intellectual property rights in the RADAC website, the RADAC catalogues, the catalogue content and the stock numbers, and that their whole or partial reproduction without our prior written consent is prohibited.

## **10. TERMS OF PAYMENT**

**10.1** Subject to any special terms agreed in Writing between the Customer and Us, We shall be entitled to invoice the Customer for the Price of the Goods on or at any time after delivery of the Goods, unless the Goods are to be collected by the Buyer or the Buyer wrongfully fails to take delivery of the Goods in which event We shall be entitled to invoice the Buyer for the price at any time after We have notified the Customer that the Goods are ready for collection or (as the case may be), We have tendered delivery of the Goods. The Customer shall pay the price of the Goods without any deduction by the end of the month following the date of our invoice, notwithstanding that delivery may not have taken place and the property in the Goods has not passed to the Buyer. The time of payment of the Price shall be of the essence of the Contract. Receipts for payment will be issued only upon request.

**10.2** Late payments we reserve the right to claim statutory interest and compensation for debt recovery cost if we are not paid according to our agreed credit terms. Interest will be calculated and charged at 8% above the Bank of England reference rate in force on the date the debt becomes overdue and at any subsequent rate where the reference rate changes and the debt remains unpaid in accordance with the Late Payment of Commercial Debts (Interest) Act 1998 as amended and supplemented by the Late Payment of Commercial Debts Regulations 2002.

**10.3** Debt recovery if proceedings are issued a minimum contribution of £295.00 (in addition to the fixed costs of issue) will be claimed towards any costs incurred with our lawyers

## **11. Limitation of liability**

**11.1** Our liability under the Contract, and in breach of statutory duty, and in tort, misrepresentation or otherwise will be limited to this clause.



*The Premier Manufacturer of High Quality Accessories for Industrial Radiography*

## **11. Limitation of liability (continued)**

**11.2** We shall not be under any liability for damage, losses (whether direct, indirect or consequential), expenses, liabilities, loss of profits, business or economic loss, depletion of goodwill, costs (including legal costs), claims, demands, proceedings, judgments or otherwise resulting from the failure to give advice or information or the giving of incorrect advice or information whether or not due to its negligence or that of its employees, agents or sub-contractors.

**11.3** Subject to the clauses below on Inspection and Acceptance and Risk and Title, all warranties, conditions or other terms implied by statute or common law (save for those implied by section 12 of the Sale of Goods Act 1979) are excluded to the fullest extent permitted by law.

**11.4** If we do not deliver Goods, our liability is limited, subject to the clause below, to the cost and expenses incurred by the Customer in obtaining replacement Goods of similar description and quality in the cheapest market available less the Price of the Goods.

**11.5** Our total liability will not, in any circumstances, exceed the total amount of the order Price payable by the Customer.

**11.6** We will not be liable (whether caused by our employees, agents or otherwise) in connection with the Goods, for:

- i. any direct, special or consequential loss, damage, cost or expense; and / or
- ii. any loss of profits; loss of anticipated profits; loss of business; loss of data; loss of reputation or goodwill;
- iii. any failure to perform any of our obligations if such delay or failure is due to any cause beyond our reasonable control; and/or
- iv. any losses caused directly or indirectly by any failure or breach by the Customer to your obligations; and / or
- v. any loss relating to the choice of the Goods and how they will meet the Customers purpose or the use by the Customer of the Goods supplied.

## **12. Export**

**12.1** Classifications of product for export purposes, including ECCN and Harmonised Tariff codes, are provided by Us in good faith based on the information available to Us at the time of compilation. We make no warranty or representation that such information is up to date or correct, and shall not be liable to the Customer for any form of loss or damage suffered by the Customer as a result of reliance upon such information. Use of the information is done so at the Customer's own risk with no recourse to Us. The Customer is responsible for ensuring compliance with all applicable export legislation, including determining the correct classification of an item at the time of any onward export

**12.2** Some products sold by Us maybe subject to export control regulations of the United Kingdom, the United States of America, the European Union and other countries ("Export Laws"). The Customer shall comply with such Export Laws and obtain any licence or permit required to transfer, export, re-export or import the products.



*The Premier Manufacturer of High Quality Accessories for Industrial Radiography*

## **12. Export (continued)**

**12.3** The Customer shall not, directly or indirectly, sell, permit to be sold, dispose of, export, re-export or otherwise provide products to any country or entity under sanction or embargo administered by the United Kingdom, the United States of America, the European Union or other country.

**12.4** The Customer certifies that products purchased from Us will not be used, sold or incorporated into products used directly or indirectly in the design, development, production or use of chemical, biological or nuclear weapons, delivery vehicles and systems of the same or in the development of any weapons of mass destruction.

## **12. Inspection and Acceptance of Goods**

**12.1** The Customer must inspect the Goods on delivery or collection.

**12.2** If the Customer identifies any damages or shortages, the Customer must inform Us in writing within 3 days of delivery or collection, providing full details.

**12.3** Other than by agreement, We will only accept returned Goods if We are satisfied that those Goods are defective and if required, have carried out an inspection.

**12.4** Subject to the Customers compliance with this clause and / or our agreement, the Customer may return the Goods and We will, as appropriate, repair, or replace, or refund the Goods or part of them.

**12.5** We will be under no liability or further obligation in relation to the Goods if:

- i. if the Customer fails to provide notice as set above ; and / or
- ii. if the Customer makes any further use of such Goods after giving notice under the clause above relating to damages and shortages; and/or
- iii. the defect arises because the Customer did not follow our oral or written instructions about the storage, commissioning, installation, use and maintenance of the Goods; and / or
- iv. the defect arises from normal wear and tear of the Goods; and/or
- v. the defect arises from misuse or alteration of the Goods, negligence, wilful damage or any other act by the Customer, the Customers employees, agents or third parties.

**12.6** Acceptance of the Goods will be deemed to be upon inspection of them by the Customer and in any event within 3 days after delivery or collection.



*The Premier Manufacturer of High Quality Accessories for Industrial Radiography*

### **13. Risk and Title**

**13.1** The risk in the Goods will pass to the Customer on completion of collection or delivery.

**13.2** Title to the Goods will not pass to the Customer until we have received payment in full (in cash or cleared funds) for; (i) the Goods and / or (ii) any other goods or services that we may have supplied the Customer in respect of which payment has become due.

**13.3** Until the title of the Goods has passed to the Customer, the Customer must (i) hold the Goods on a fiduciary basis as our bailee; and/or (ii) store the Goods separately and not remove, deface or obscure any identification mark or packaging on or relating to the Goods; and /or (iii) keep the Goods in satisfactory condition and keep them insured against all risk for their full price from the date of delivery.

### **14. Force Majeure**

**14.1** A force majeure event is any event beyond the reasonable control of Radiographic Accessories Limited (including but not limited to strikes, traffic congestion, the downtime of any external line, or Radiographic Accessories Limited inability to procure services, materials or articles required for the performance of the contract except at enhanced prices). If Radiographic Accessories Limited is prevented or restricted from carrying out all or any of its obligations under these terms and conditions of sale by reason of any force majeure event, then Radiographic Accessories Limited shall be relieved of its obligations during the period that such event continues, and shall not be liable for any delay and/or failure in the performance of its obligations during such period. If the force majeure event continues for a period longer than Ten days, Radiographic Accessories Limited may cancel the affected order or cancel the whole or any part of these terms and conditions of sale, without any liability to the Customer.

### **15. Law and Jurisdiction**

**15.1** The contract between Radiographic Accessories Limited and the Customer based on these terms and conditions of sale as applicable to each Customer order shall be governed by and interpreted in accordance with English Law and the Customer submits to the non-exclusive jurisdiction of the English courts, but Radiographic Accessories may enforce the contract in any court of competent jurisdiction.

**15.2** If any part of these terms and conditions of sale is found to be unenforceable by any court or competent authority or would be found to be unenforceable if it were interpreted or construed in a particular way, then it is the parties' express intention that the relevant wording should be interpreted or construed so as to avoid such a finding and that, in the event of such a finding, the remainder of the provision in question shall be interpreted or construed to give it full effect.



*The Premier Manufacturer of High Quality Accessories for Industrial Radiography*

